

Multilevel Inverter Topologies With Reduced Device Count: A Review

Krishna Kumar Gupta, *Member, IEEE*, Alekh Ranjan, *Member, IEEE*, Pallavee Bhatnagar, *Member, IEEE*, Lalit Kumar Sahu, *Member, IEEE*, and Shailendra Jain, *Senior Member, IEEE*

Abstract—Multilevel inverters have created a new wave of interest in industry and research. While the classical topologies have proved to be a viable alternative in a wide range of high-power medium-voltage applications, there has been an active interest in the evolution of newer topologies. Reduction in overall part count as compared to the classical topologies has been an important objective in the recently introduced topologies. In this paper, some of the recently proposed multilevel inverter topologies with reduced power switch count are reviewed and analyzed. The paper will serve as an introduction and an update to these topologies, both in terms of the qualitative and quantitative parameters. Also, it takes into account the challenges which arise when an attempt is made to reduce the device count. Based on a detailed comparison of these topologies as presented in this paper, appropriate multilevel solution can be arrived at for a given application.

Index Terms—Even power distribution, fundamental switching frequency operation, multilevel inverters (MLI), reduced device count, source configuration.

I. INTRODUCTION

DC to ac power conversion is a key technology in the modern set-up of generation, transmission, distribution, and utilization of electric power. DC to ac power converters (“inverters”) play a crucial role in variable frequency drives, air conditioning, uninterruptible power supplies, induction heating, high-voltage dc power transmission, electric vehicle drives, static var compensators, active filters, flexible ac transmission systems, and dc power source utilization (such as electricity obtained from batteries, solar panels, or fuel cells) [1], [2]. With the advent of recent power electronics devices, digital controllers, and sensors, the role of power inverters is also envisaged and acknowledged in frontiers such as futuristic smart grids and greater penetration of renewable energy sources-based power generation [3].

Based on the nature of the output waveform, inverters can be classified as: square wave inverters, quasi-square wave inverters,

Manuscript received February 24, 2014; revised April 30, 2014 and July 10, 2014; accepted August 12, 2014. Date of publication February 26, 2015; date of current version September 21, 2015. Recommended for publication by Associate Editor J. R. Rodriguez.

K. K. Gupta is with the Department of Electrical and Electronics Engineering, Jai Narain College Of Technology, Bhopal 462038, India (e-mail: kk_mact@rediffmail.com).

P. Bhatnagar and S. Jain are with the Department of Electrical Engineering, Maulana Azad National Institute of Technology, Bhopal 462051, India (e-mail: pallaveebhatnagar@gmail.com; sjain68@gmail.com).

A. Ranjan is with the Crompton Greaves Ltd., Bhopal 462046, India (e-mail: alekh.ranjan@cgglobal.com).

L. K. Sahu is with the Department of Electrical Engineering, National Institute of Technology, Raipur 492001, India (e-mail: lalitsahu9@gmail.com).

Color versions of one or more of the figures in this paper are available online at <http://ieeexplore.ieee.org>.

Digital Object Identifier 10.1109/TPEL.2015.2405012

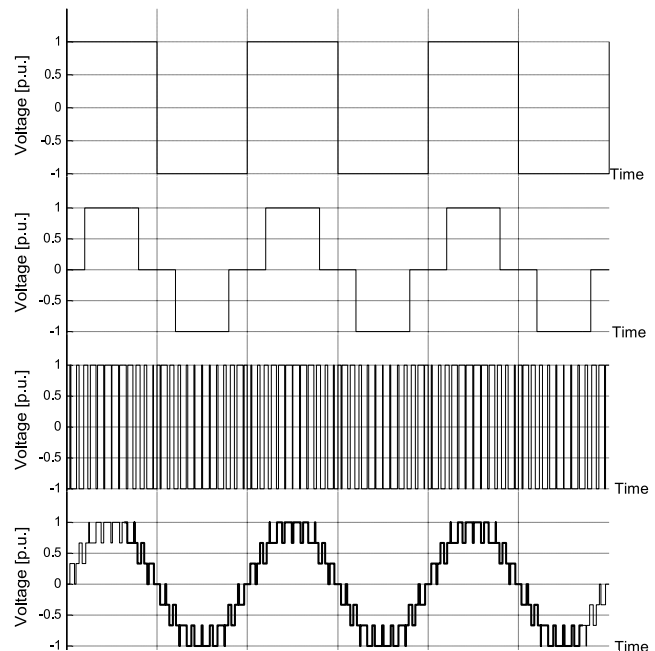


Fig. 1. Typical inverter waveforms: (a) Square wave. (b) Quasi-square wave. (c) Two-level PWM waveform. (d) Multilevel PWM waveform.

two-level pulse width modulation (PWM) inverters, and multilevel inverters (MLIs) [4]. These waveforms are illustrated in Fig. 1. The MLI structure has been introduced as an alternative in high-power and medium-voltage situations. The elementary concept of an MLI to achieve higher power is to use power semiconductor switches along with several lower voltage dc levels to perform the power conversion by synthesizing a staircase voltage waveform. Capacitors, batteries, and renewable energy voltage sources can be used as the multiple input dc levels. Power switches are controlled so as to aggregate these multiple input dc levels to achieve high voltage at the output, while the rated voltage of the power semiconductor switches depends on the rating of the dc voltage sources to which they are connected. Thus, in general, the voltage stress on a power switch is much lower than the operating voltage.

A. Multilevel DC to AC Conversion and Classical Topologies

The multilevel approach for dc to ac conversion offers many advantages such as [5]–[10]:

- 1) The staircase waveform not only exhibits a better harmonic profile but also reduces the dv/dt stresses. Thus, the

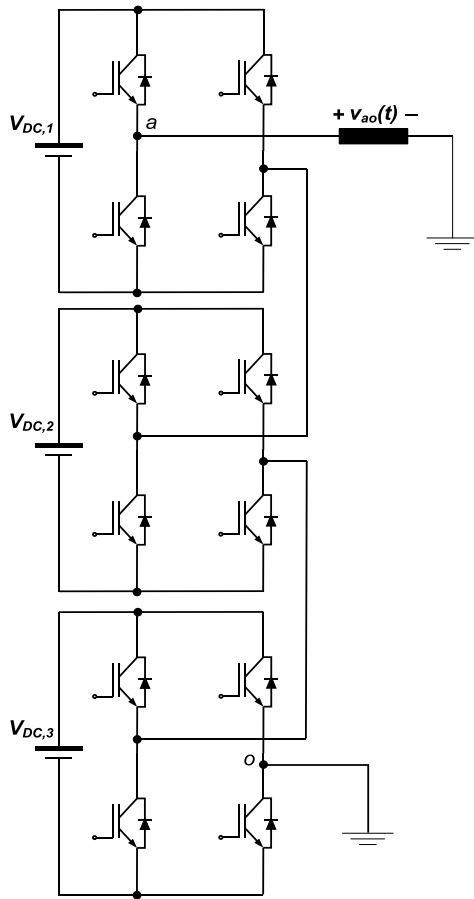


Fig. 2. CHB structure for MLIs.

filter requirements can be greatly brought down (or even eliminated), while electromagnetic compatibility problems can be reduced.

- 2) The voltage stresses on the semiconductor devices are much lesser as compared to the overall operating voltage. Thus, a high-voltage waveform can be obtained with comparatively low-voltage rated switches.
- 3) MLIs produce much smaller common mode voltage and thus, the stress in the bearings of a motor connected to a multilevel motor drive can be reduced.
- 4) Many multilevel topologies offer the possibility to obtain a given voltage level with multiple switching combinations. These redundant states can be utilized to program a fault tolerant operation.
- 5) MLIs can draw input current with low distortion.
- 6) Renewable energy sources such as photovoltaic, wind, and fuel cells can be easily interfaced to a multilevel converter system and can be controlled for equal load sharing amongst the input sources.

Over the past few decades, MLIs have attracted wide interest both in the research community and in the industry, as they are becoming a viable technology for many applications. In the mid 1970s, the first patent describing a converter topology capable of producing multilevel voltage from various dc voltage sources was published by Baker and Bannister [11]. The topology

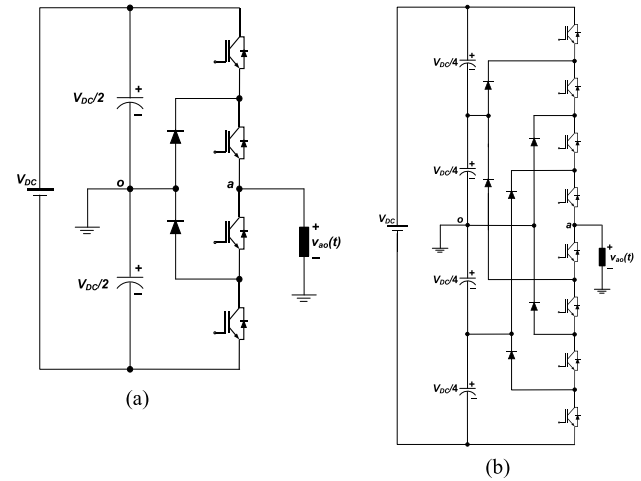


Fig. 3. One leg of neutral-point /diode-clamped structure; (a) three-level; and (b) five-level.

consists of single-phase inverters connected in series as depicted in Fig. 2, and it is known as series-connected H-bridge inverter, or cascaded H-bridge (CHB) inverter.

In another patent by Baker [12] in 1980, a modified multilevel topology was introduced, for which three-level and five-level versions are illustrated in Fig. 3(a) and (b), respectively. In contrast to the CHB inverters, this converter can produce multilevel voltage from a single dc source with extra diodes connected to the neutral point. This topology is now widely referred to as the neutral point clamped (NPC) inverter and/or diode clamped topology. In 1980, Nabae *et al.* [13] demonstrated the implementation of NPC inverter using a PWM scheme. In the 1980s, much of the research was focused only on three-level inverters. The so-called flying capacitor (FC) was introduced in the 1990s by Meynard and Foch [14] and Lavieville *et al.* [15]. The topology of the FC inverter is depicted in Fig. 4(a) for three-level and in Fig. 4(b) for five-level applications. Much of the literature published in past few decades have shown intense focus in studying the diode clamped, FCs and CHB topologies with regards to their respective pros and cons [5], [16]–[34], and these topologies are now widely referred to as the “classical topologies.”

B. Advent of New Topologies With Application-Oriented Approach

The so-called “classical topologies” have attracted maximum attention both from the academia and industry. Still, no specific topology seems to be absolutely advantageous as multilevel solutions are heavily influenced by application and cost considerations. Because of its intrinsic characteristics, a given topology can be very well adapted in some cases and totally unsuitable in some others. Therefore, the optimal solution is often recommended on case-to-case basis. Hence, along with the exploration of classical topologies, researchers continued (and still continue) to evolve newer topologies with an application-oriented approach. In this subsection, some of such contributions are discussed.

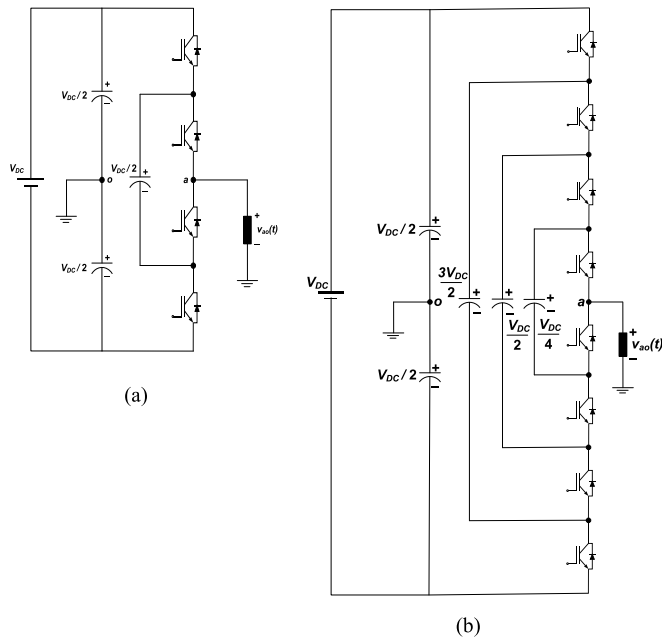


Fig. 4. One leg of flying capacitor structure; (a) three-level; and (b) five-level.

Agelidis *et al.* [35] presented a multilevel PWM single-phase voltage-source inverter topology for photovoltaic applications, which utilizes a combination of unidirectional and bidirectional switches of different ratings along with the use of phase-opposition carrier disposition multicarrier PWM switching technique. Manjrekar and Lipo [36] have presented a hybrid inverter based on the CHB topology for a 500 HP, 4.5-kV induction motor drive with investigations on design optimization, capacitor voltage balancing, and harmonic profile of the output waveform. In [37], Xiomng and Barbi presented a modified diode-clamped structure with a view to solve the problem of series-connected diodes in the conventional diode clamped inverter. In this structure, apart from the clamping of the main switches with clamping diodes, there is mutual clamping amongst the clamping diodes themselves.

Cheng and Crow [38] have proposed to employ an additional circuitry, integrated with the diode clamped inverter for implementing a static compensator with battery energy storage system (STATCOM/BESS) using a diode clamped structure, so as to achieve effective balancing of the dc-link capacitors. To reduce the number of dc–dc converters supplying the cells of reversible multilevel converters, a topology is proposed by Mariethoz and Rufer [39] combining in series a three-phase six-switch voltage source inverter with single phase H-bridges, resulting in advantages in terms of voltage resolution and energetic efficiency. An innovative topological structure using a three-phase three-level integrated gate-commutated thyristor inverter (main inverter), with a two-level insulated-gate bipolar transistor (IGBT) H-bridge (subinverter) in series with each phase has been proposed by Veenstra and Rufer [40] along with asymmetric source configuration to obtain a nine-level waveform for implementation of a medium-voltage drives application. To obtain uncompromised multilevel voltage waveform in the event of partial failure(s) in the power circuit, a fault tolerant topology was proposed by

Chen *et al.* [41] which maintains the output voltage waveform utilizing control signal modification along with redundancy offered by multi switching states.

For photovoltaic medium and high power range with grid connection of two isolated photovoltaic generators, a topology was proposed by Grandi *et al.* [42] utilizing dual two-level voltage source inverter so as to obtain a multilevel waveform thereby reducing grid current harmonics and mitigating output voltage derivatives. Lezana *et al.* [43] have proposed a modification in the classical cascaded H-bridge topology with an active front end with the objectives of problem-free regenerative mode of operation for loads (such as laminators and downhill conveyors) demanding regeneration capability on the converter and effective control of the input current and output voltage waveforms. A solution for standalone applications requiring few kilowatts of power with single battery storage was presented by Daher *et al.* [44] with a MLI topology utilizing multiwinding transformer with appropriate turn-ratios and an array of bidirectional power switches.

Du *et al.* [45] have shown implementation of a cascaded multilevel boost inverter for electric vehicle and hybrid electric vehicle applications without the use of inductors and multiple power supplies and utilizing a fundamental switching frequency modulation scheme. Ewanchuk *et al.* [46] have proposed an introduction of coupled reactors in each leg of the NPC topology, for low-voltage high-speed motor applications, offering an increased number of output PWM voltage levels, higher frequency PWM output waveforms, reduced dead-time effects, and a significant reduction in harmonic content. Another important contribution in the evolution of MLI topologies is the introduction of “modular multilevel converter (MMC)” [10]. MMC has become an attractive topology for medium/high-power applications, specifically the voltage-source converter high-voltage direct current transmission systems. This topology is simpler than CHB inverter and has several advantages such as modularity and redundancy.

Thus, apart from the exclusive and extensive studies into various aspects of the “classical topologies,” researchers continue to contribute toward evolution of newer multilevel structures for different applications. Moreover, due to the advantages offered by MLIs, efforts are also being made to impart technological and economical feasibility to MLIs for low power applications [47]–[49].

C. Topologies With Reduced Device Count and Scope of This Paper

In view of their many advantages, MLIs are receiving much more and wider attention both in terms of topologies and control schemes. MLIs, however, exhibit an important limitation—for an increased number of output levels, they require a large number of power semiconductor switches, thereby increasing the cost, volume, and control complexity. Although low-voltage-rated switches can be utilized in an MLI, each switch requires a related gate driver unit, protection circuit, and heat sink. This may cause the overall system to be more expensive, bulky, and complex. Consequently, for past few years, efforts are being

directed to reduce the power switch count in MLIs and a large number of topologies have appeared in the literature [50]–[68]. These topologies have their own merits and demerits from the point of view of application requirements. As of now, no literature is available which comprehensively reviews the aforementioned topologies, thereby stipulating their comparative advantages and limitations. This paper aims at presenting a review of MLI topologies proposed with the exclusive objective of reducing the power switch count. Analysis of these topologies has been specifically carried out in terms of: count of power semiconductor components, total voltage blocking capability requirement, possibility of even power distribution amongst the input dc sources, possibility of optimal distribution of switching frequency amongst the power switches, and possibility of employing asymmetric sources. In addition, this paper provides a list of appropriate references in relation to MLI topologies and their control. Although the development of topologies has been accompanied with advancement in modulation schemes [5]–[7], this paper focuses only on the topological features and their consequences.

The remainder of this paper is organized as follows. In Section II, a brief description of terminologies used in this paper is given. Some of recent reduced-switch-count topologies of MLIs are discussed in Section III and comments are made on them based on qualitative and quantitative parameters. A discussion is presented in Section IV. Concluding remarks are made in Section V.

II. TERMINOLOGY, ASSESSMENT PARAMETERS, AND CLASSIFICATION OF TOPOLOGIES

Prior to a comparative analysis of topologies, some terms pertaining to the assessment criteria are defined. Thereafter, various criteria to assess reduced device count topologies are discussed, and a classification of the topologies is presented so that a broad outline can be drawn.

A. Terminology

1) *Reduced Device Count Multilevel Inverter (RDC-MLI) Topologies*: Topologies which are proposed/presented with an exclusive claim of reducing the number of controlled switching power semiconductor devices for a given number of phase voltage levels are referred to as RDC-MLI topologies. In this paper, nine such topologies [50]–[68] are reviewed.

2) *Total Voltage Blocking Capability*: For a topology, the total sum of the voltage blocking capability requirement for all its power switches is referred to as the “total voltage blocking capability” [65]. For example, if a structure consists of four switches rated at V_{DC} and six switches rated at $2V_{DC}$, the total voltage blocking capability requirement would be: $[(4 \times V_{DC}) + (6 \times 2V_{DC}) = 16V_{DC}]$.

3) *Symmetric and Asymmetric Source Configuration*: When the voltages of the input dc levels to an MLI are all equal, the source configuration is known as “symmetric,” otherwise “asymmetric” [59]. Two popular asymmetric source configurations are: binary and trinary. In binary configuration, values of voltage levels are in geometric progression (GP) with a factor

TABLE I
EXAMPLE OF POSSIBILITY OF “EVEN POWER DISTRIBUTION” WHEN THREE INPUT SOURCES $V_{DC,1} = V_{DC,2} = V_{DC,3} = V_{DC}$ ARE AVAILABLE

Output voltage level	Required combination of input dc levels
$\pm V_{DC}$	$\pm V_{DC,1}$
$\pm V_{DC}$	$\pm V_{DC,2}$
$\pm V_{DC}$	$\pm V_{DC,3}$
$\pm 2V_{DC}$	$\pm(V_{DC,1} + V_{DC,2})$
$\pm 2V_{DC}$	$\pm(V_{DC,2} + V_{DC,3})$
$\pm 2V_{DC}$	$\pm(V_{DC,1} + V_{DC,3})$
$\pm 3V_{DC}$	$\pm(V_{DC,1} + V_{DC,2} + V_{DC,3})$

of “2” (i.e. V_{DC} , $2V_{DC}$, $4V_{DC}$, $8V_{DC}$. . .), while in trinary configuration the GP factor is “3” (i.e., V_{DC} , $3V_{DC}$, $9V_{DC}$, $27V_{DC}$. . .). There are many other asymmetric source configurations proposed by various researchers [44]. An asymmetric source configuration is employed to synthesize more number of output levels with the same count of power switches.

4) *Even Power Distribution*: When the multilevel dc to ac conversion is carried out in such a way that each input source contributes equal power to the load, the “power distribution” amongst the sources is said to be “even.” Some authors also refer to it as “charge balance control” or “equal load sharing” [49]. “Even power distribution” is a feature of control aspect, only when the topology permits so. When the source configuration is symmetric, the control algorithm is designed such that the average current drawn from each source is equal, thereby making average powers equal. For a given topology, even power distribution is possible if each input source contributes toward all the output levels in one or more output cycles. For example, if a topology has three symmetric input dc sources $V_{DC,1}$, $V_{DC,2}$, and $V_{DC,3}$ ($V_{DC,1} = V_{DC,2} = V_{DC,3} = V_{DC}$), then even power distribution is possible if all the combinations shown in Table I are permitted by the topology.

5) *Level-Generation and Polarity-Generation*: An MLI synthesizes a stepped waveform consisting of the input dc levels and their additive and/or subtractive combinations. Thus, the voltage waveform consists of multiple “levels” with both “positive” and “negative” polarities (in positive and negative half cycles, respectively). Many a times, an MLI circuit is such that a part of it synthesizes the multiple levels with only one polarity and an H-bridge is used to convert this single polarity waveform to a bipolar one for the ac load. These parts are, respectively, referred to as “level-generation part” and “polarity-generation part” [66]. It is important to mention here that the power switches for the polarity generation part need to have a minimum voltage rating equal to the operating voltage of the MLI.

6) *Fundamental Frequency Switching*: The switching losses in a converter are proportional to the current, blocking voltage, and switching frequency [68]. To minimize the switching losses, it is preferred to operate higher voltage-rated power switches at a low frequency and if possible, at the power frequency (or fundamental frequency), without compromising the quality of output waveform. A power switch in a topology can operate at fundamental switching frequency if it remains ON for one complete half cycle (either positive or negative) and remains OFF for

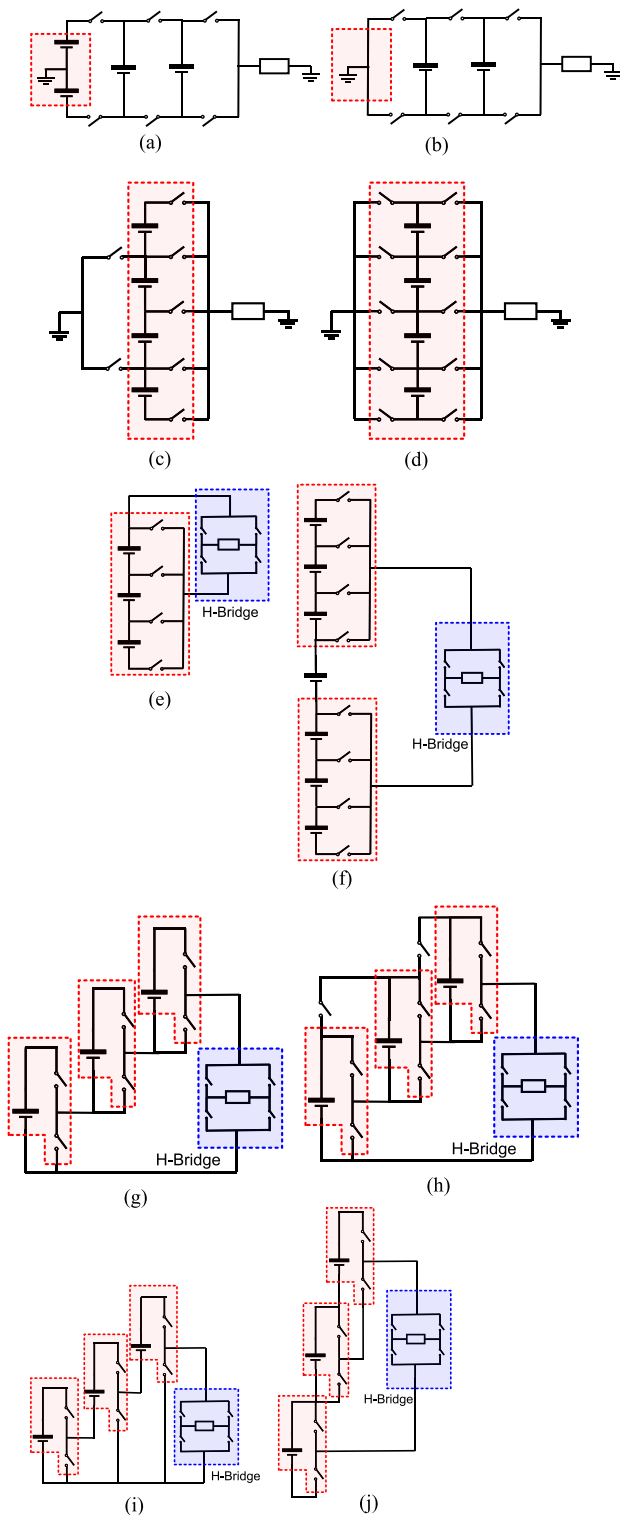


Fig. 5. Similarities in the structures of various topologies.

the next complete half cycle, while the desired multilevel waveform is synthesized at the load terminals. Thus, fundamental frequency switching frequency is a control feature of modulation scheme, provided the topology permits so. In addition, when a topology consists of power switches with different voltage ratings, in order to properly distribute the switching losses,

the higher voltage rated switches should be operated at comparatively lower switching frequencies while those with lower voltage rating should be operated with comparatively higher switching frequencies. Thus, the switching frequency should be calculatedly “distributed” if the topology offers such a possibility. Also, if the level generation part of a topology can synthesize the zero level, then switches of polarity generation can be operated at the line frequency.

B. Assessment Parameters

Merit of any given topology can be primarily judged based on the application for which it has to be employed. Still, in the context of this paper, the general criteria for an overall assessment of the merit of an RDC-MLI and its comparison with the other topologies can be:

- 1) the number of power switches used;
- 2) the total blocking voltage of the converter;
- 3) the optimal controllability of the topology, in terms of the possibilities of charge-balance control (or “even power distribution” amongst the input sources) and appropriate distribution of switching frequencies amongst the differently voltage-rated switches;
- 4) possibility of employing asymmetric sources/capacitor voltage ratios in the topology.

While parameters 1 and 2 affect reliability of the inverter, efficiency is influenced by parameters 1, 2, and 3 and application, performance, and control complexity are governed by parameter 3. Number of redundant states and consequently, programmability of fault tolerant operation, is directly influenced by 1 and 4. In addition, apart from 1 and 2, the cost of a converter also depends on the dispersion of power switching ratings (e.g., using one 400 V switch and one 800 V switch would be, in principle, more expensive than using two 600 V switches).

C. Categorization of RDC-MLI Topologies

In this paper, nine different RDC-MLI topologies, as proposed in [50]–[68], are evaluated. These topologies are enlisted as follows.

- 1) cascaded half-bridge-based multilevel dc-Link (MLDCL) inverter [50], [51];
- 2) T-type Inverter [52]–[54];
- 3) switched series/parallel sources (SSPS)-based MLI [55], [56];
- 4) series-connected switched sources (SCSS)-based MLI [57], [58];
- 5) cascaded “bipolar switched cells” (CBSC)-based MLI [59];
- 6) packed-U cell (PUC) topology [60]–[64];
- 7) multilevel module (MLM)-based MLI [65];
- 8) reversing voltage (RV) topology [66], [67];
- 9) two-switch enabled level-generation (2SELG)-based MLI [68].

While a detailed analysis of these topologies is presented in Section III, it is important to appreciate that there are several similarities between the different RDC-MLI topologies which can be clearly seen if they are drawn with a similar structure,

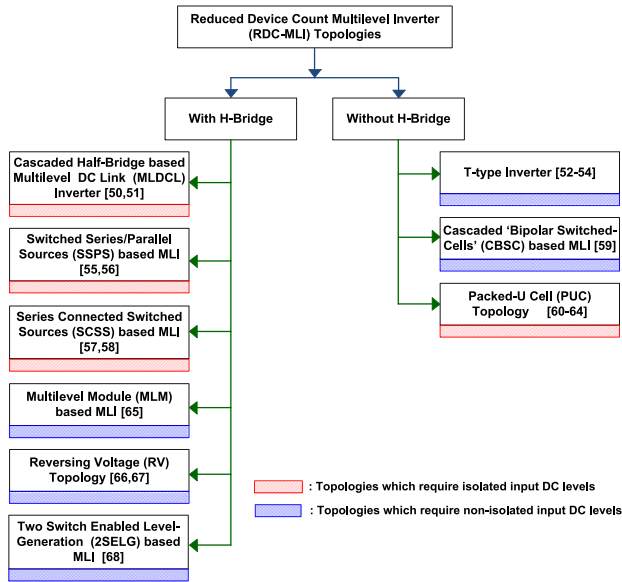


Fig. 6. Categorization of RDC-MLI topologies.

without taking into account the actual power switch configurations. For example, as shown in Fig. 5(a) and (b), it can be observed that the PUC topology is equivalent to the FC structure without dc sources. As indicated in Fig. 5(c) and (d), the T-type inverter [52]–[54] and CBSC-based MLI [59] have similar units. The 2SELG-based MLI [68] consists of repeated connection of the units used in MLM-based MLI [65] as shown in Fig. 5(e) and (f). Similarly, the topologies proposed in [50], [55], [57], and [66] consist of similar arrays of sources and switches connected in various fashions, as depicted in Fig. 5(g), (h), (i), and (j). With the help of Fig. 5, it can be observed that the RDC-MLI topologies can be classified as those with H-bridge and those without H-bridge. In addition, these topologies may need isolated input dc levels or nonisolated input dc levels. Thus, a broad categorization of RDC-MLI topologies is presented in Fig. 6.

III. REVIEW OF MLI TOPOLOGIES WITH REDUCED DEVICE COUNT

In this section, nine RDC-MLIs are reviewed and based on the parameters mentioned in Section II-B, topologies with reduced device count are discussed in this section. The topologies are presented in their single-phase form for the sake of simplicity. Their overall comparison, however, is carried out in terms of three-phase implementation, because MLIs are mostly administered in three-phase configurations. In addition, the illustrations for these topologies are indicated with four input sources and various valid switching states are tabulated. For the TCS-MLDCL inverter, however, seven sources are shown so that its general structure can be comprehended.

A. Cascaded Half-Bridge-Based MLDCL Inverter

Su [50], [51] has presented a new MLI named as “Cascaded Half-Bridge-based MLDCL inverter.” An MLDCL inverter with four input dc levels is shown in Fig. 7. It com-

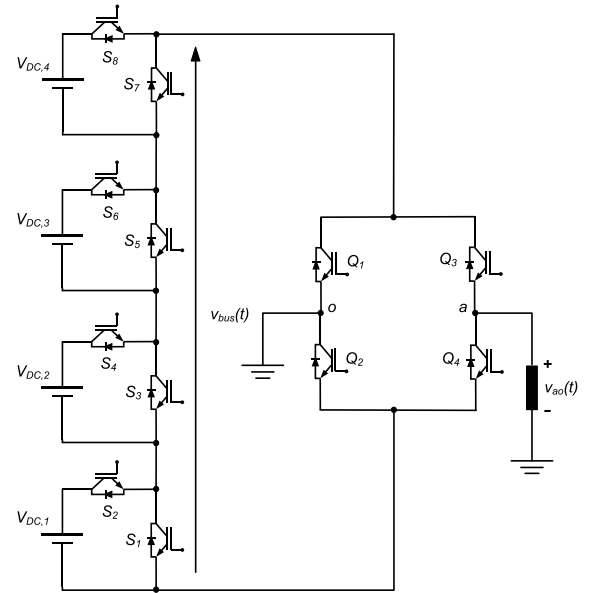


Fig. 7. Cascaded half-bridge-based MLDCL inverter as proposed in [50] and [51].

TABLE II
VALID SWITCHING STATES FOR THE “MLDCL TOPOLOGY” SHOWN IN FIG. 7

State	$v_{bus}(t)$	Switches in ON state
1	$V_{DC,1}$	S_2, S_3, S_5, S_7
2	$V_{DC,2}$	S_1, S_4, S_5, S_7
3	$V_{DC,3}$	S_1, S_3, S_6, S_7
4	$V_{DC,4}$	S_1, S_3, S_5, S_8
5	$V_{DC,1} + V_{DC,2}$	S_2, S_4, S_5, S_7
6	$V_{DC,1} + V_{DC,3}$	S_2, S_3, S_6, S_7
7	$V_{DC,1} + V_{DC,4}$	S_2, S_3, S_5, S_8
8	$V_{DC,2} + V_{DC,3}$	S_1, S_4, S_6, S_7
9	$V_{DC,2} + V_{DC,4}$	S_1, S_4, S_5, S_8
10	$V_{DC,3} + V_{DC,4}$	S_1, S_3, S_6, S_8
11	$V_{DC,1} + V_{DC,2} + V_{DC,3}$	S_2, S_4, S_6, S_7
12	$V_{DC,2} + V_{DC,3} + V_{DC,4}$	S_1, S_4, S_6, S_8
13	$V_{DC,1} + V_{DC,3} + V_{DC,4}$	S_2, S_3, S_6, S_8
14	$V_{DC,1} + V_{DC,2} + V_{DC,4}$	S_2, S_4, S_5, S_8
15	$V_{DC,1} + V_{DC,2} + V_{DC,3} + V_{DC,4}$	S_2, S_4, S_6, S_8
16	0	S_1, S_3, S_5, S_7

prises of cascaded half-bridge cells, with each cell having its own dc source. It has separate “level-generation” and “polarity-generation” parts. The level-generation part comprises of the sources $V_{DC,j}$ $\{j = 1, 2, 3, 4\}$ and the power switches S_j $\{j = 1$ to 8 $\}$. This part synthesizes a multilevel dc voltage, $v_{bus}(t)$, fed to the “polarity-generation” part, comprising of switches Q_j $\{j = 1$ to 4 $\}$, which in turn alternates the polarity to produce a multilevel ac waveform.

Compared with the CHB topology, the MLDCL inverter can significantly reduce the switch count as well as the number of gate drivers as the number of voltage levels increases [50]. With reference to Fig. 7, various valid switching combinations that can be used to obtain the MLDCL voltage $v_{bus}(t)$ are summarized in Table II.

It can be observed from Table II that to obtain a given level, four switches conduct simultaneously for the level-generation

part and two switches conduct for the polarity-generation part (switches Q_1 and Q_4 for the positive half cycle, Q_2 and Q_3 for the negative half cycle, and $Q_1, Q_3/Q_2, Q_4$ for the zero level). It can be observed from the topology that each power switch of polarity-generation part must possess a minimum voltage blocking capability equal to the sum of the input voltage values. Thus, these switches are rated higher as compared to the switches in the level-generation part. However, since the zero level can be synthesized using switches of the polarity-generation part, the higher rated switches $Q_j \{j = 1 \text{ to } 4\}$ can be operated at fundamental switching frequency.

For a symmetric source configuration with $V_{DC,1} = V_{DC,2} = V_{DC,3} = V_{DC,4} = V_{DC}$, it can be observed that the switches $S_j \{j = 1 \text{ to } 8\}$ need to block a voltage of V_{DC} and need to conduct a current equal to the load current while the switches $Q_j \{j = 1 \text{ to } 4\}$ need to block a voltage equal to $4V_{DC}$ and conduct a current equal to the load current. Moreover, it can be observed from Table II that since voltage levels $V_{DC}, 2V_{DC}, 3V_{DC}$, and $4V_{DC}$ can be synthesized combining all the input sources in groups of one, two, and three, respectively, equal load sharing amongst them is possible. These redundancies also provide flexibility in voltage balancing, in case capacitors are used.

Regarding asymmetric source configurations in the MLDCI topology, no comments are offered in [50] and [51]. Since subtractive combinations of the input dc levels cannot be synthesized, the trinary source configuration cannot be employed for this topology. As it can be observed from Table II, a binary source configuration with $V_{DC,1} = V_{DC}$, $V_{DC,2} = 2V_{DC}$, $V_{DC,3} = 4V_{DC}$, and $V_{DC,4} = 8V_{DC}$ is possible since the voltage levels $V_{DC}, 2V_{DC}, 3V_{DC}, 4V_{DC}, 5V_{DC}, 6V_{DC}, \dots, 15V_{DC}$ can be synthesized by utilizing the states presented in Table II.

As suggested by the author in [50] and [51], one application area in the low-power range ($< 100 \text{ kW}$) for the MLDCI inverters is in the permanent-magnet (PM) motor drives employing a PM motor of very low inductance. The level-generation part can utilize the fast-switching low-cost low-voltage MOSFETs and the polarity-generation part can use IGBTs so as to dramatically reduce the current and torque ripples and to improve motor efficiency by reducing the associated copper and iron losses resulting from the current ripple. The MLDCI inverter can also be applied in distributed power generation involving fuel cells and photovoltaic cells.

B. T-Type Inverter

Ceglia *et al.* [52]–[54] reported a new MLI topology, here-with referred to as the “T-type inverter.” The primary introduction to the topology is described in [52] with the help of a five-level single-phase inverter which results in a significant reduction in the number of power devices as compared to the conventional topologies. A single-phase structure of the topology with four input voltage sources is shown in Fig. 8. It comprises of three switches $S_j \{j = 1, 2, 3\}$ which are bidirectional-blocking-bidirectional-conducting while four switches $Q_j \{j = 1 \text{ to } 4\}$ are unidirectional-blocking-bidirectional-conducting.

Thus, this topology inadvertently requires a mix of unidirectional and bidirectional power switches. Valid switching states

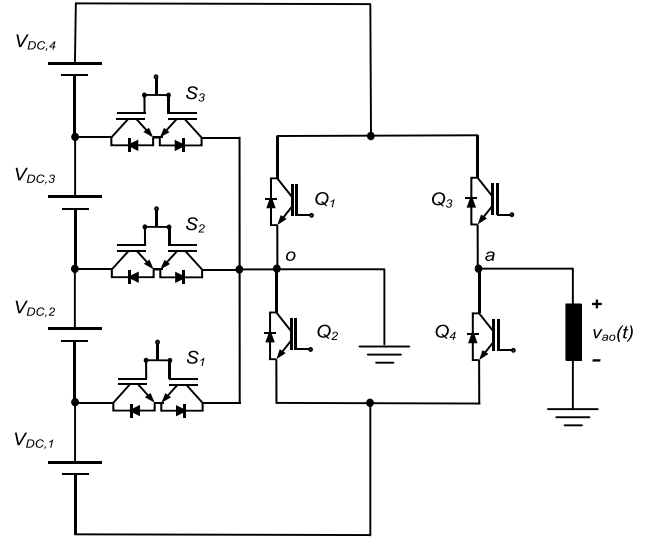


Fig. 8. T-type inverter as proposed in [52]–[54].

TABLE III
VALID SWITCHING STATES FOR THE “T-TYPE INVERTER” SHOWN IN FIG. 8

State	Output voltage [$v_{ao}(t)$]	Switches in ON state
1	$-V_{DC,1}$	S_1, Q_4
2	$V_{DC,4}$	S_3, Q_3
3	$-(V_{DC,1} + V_{DC,2})$	S_2, Q_4
4	$V_{DC,3} + V_{DC,4}$	S_2, Q_3
5	$-(V_{DC,1} + V_{DC,2} + V_{DC,3})$	S_3, Q_4
6	$V_{DC,2} + V_{DC,3} + V_{DC,4}$	S_1, Q_3
7	$-(V_{DC,1} + V_{DC,2} + V_{DC,3} + V_{DC,4})$	Q_1, Q_4
8	$V_{DC,1} + V_{DC,2} + V_{DC,3} + V_{DC,4}$	Q_2, Q_3
9	0	Q_1, Q_3
10	0	Q_2, Q_4

for the inverter are summarized in Table III, and it can be seen that the input dc values are required to be symmetric, i.e., $V_{DC,1} = V_{DC,2} = V_{DC,3} = V_{DC,4} = V_{DC}$. This is so because not all the additive/subtractive combinations of the input voltage levels can be synthesized at the load terminals and many times either a positive or negative combination can be synthesized but not both. For example, while a voltage level $-V_{DC,4}$ can be synthesized at the load terminals, the level $+V_{DC,4}$ cannot be synthesized. Thus, it is imperative that the input sources are symmetric. Also, lack of sufficient redundancies goes against an effective voltage balancing. It can also be observed from Table III that equal load sharing amongst the input voltage sources is not possible as the number of valid states is very limited. For a given state, only two switches conduct simultaneously. The bidirectional switches are voltage-rated at different values. While S_2 should be minimally rated at $2V_{DC}$, S_1 and S_3 should be rated at $3V_{DC}$ each. Switches $Q_j \{j = 1 \text{ to } 4\}$ must have minimum blocking capability of $4V_{DC}$ each. These higher-voltage rated switches, however, can be operated at the fundamental switching frequency. A three-phase inverter based on this topology can be implemented with a single dc link. In

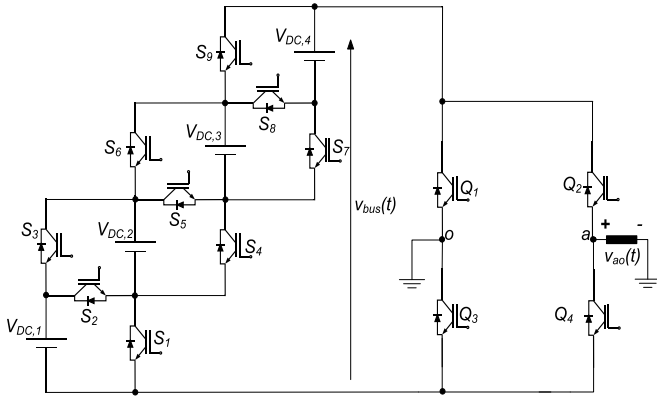


Fig. 9. SSPS-based MLI as proposed in [55] and [56].

addition, available literature indicates that it can be effectively used for drives and renewable energy based applications.

C. SSPS-Based MLI

Hinago and Koizumi [55], [56] proposed a single-phase MLI consisting of an H-bridge and DC sources which can be switched in series and in parallel. The topology is herewith referred to as “SSPS-based MLI.” The topology requires the same of number of voltage sources as required by a CHB topology but it synthesizes same number of output levels with lesser number of power switches. An important application suggested is for electric vehicular applications where a single battery composed of a number of series-connected battery cells is available, which can be rearranged using the switched sources topology, hence reducing the requirement of switching devices. More importantly, possibility of combining two or more sources in series and parallel gives enough flexibility for meeting voltage/power requirements in the vehicle drive system.

The aforesaid topology with four input dc sources is shown in Fig. 9, consisting of two parts: level-generation part which consists of the switched sources and synthesizes a bus voltage $v_{bus}(t)$ and the polarity-generation part which synthesizes positive and negative cycles of voltage $v_{bus}(t)$ to feed an ac load. Four sources $V_{DC,j}$ $\{j = 1 \text{ to } 4\}$ and power switches S_j $\{j = 1 \text{ to } 9\}$ constitute the level-generation part while power switches Q_j $\{j = 1 \text{ to } 4\}$ constitute the polarity-generation part. The voltage levels which can be synthesized by the switched sources part are summarized in Table IV.

For a symmetric source configuration, i.e., $V_{DC,1} = V_{DC,2} = V_{DC,3} = V_{DC,4} = V_{DC}$, it can be observed from Table IV that the voltage levels V_{DC} and $2V_{DC}$ can be synthesized with three states each while one state is available for voltage level $3V_{DC}$. Moreover, the voltage stress experienced by the switches S_j $\{j = 1 \text{ to } 9\}$ in this case would be equal to V_{DC} each. An important limitation of this topology is that the switches Q_j $\{j = 1 \text{ to } 4\}$ need to have a minimum blocking capability equal to summation of voltages of all voltage sources. Thus, for the symmetric source configuration with four sources, the switches of polarity-generation part should possess voltage blocking capability of $4V_{DC}$. Another important limitation is

TABLE IV
VALID SWITCHING STATES FOR THE “SSPS-MLI” SHOWN IN FIG. 9

State	$v_{bus}(t)$	Switches in ON state
1	$V_{DC,1}$	S_3, S_6, S_9
2	$V_{DC,2}$	S_1, S_6, S_9
3	$V_{DC,3}$	S_1, S_4, S_9
4	$V_{DC,4}$	S_1, S_4, S_7
5	$V_{DC,1} + V_{DC,2}$	S_2, S_6, S_9
6	$V_{DC,1} + V_{DC,3}$	S_3, S_5, S_9
7	$V_{DC,1} + V_{DC,4}$	S_3, S_6, S_8
8	$V_{DC,2} + V_{DC,3}$	S_1, S_5, S_9
9	$V_{DC,2} + V_{DC,4}$	S_1, S_5, S_7
10	$V_{DC,3} + V_{DC,4}$	S_1, S_4, S_8
11	$V_{DC,1} + V_{DC,2} + V_{DC,3}$	S_2, S_5, S_9
12	$V_{DC,1} + V_{DC,2} + V_{DC,4}$	S_2, S_6, S_8
13	$V_{DC,2} + V_{DC,3} + V_{DC,4}$	S_1, S_5, S_8
14	$V_{DC,1} + V_{DC,3} + V_{DC,4}$	S_3, S_5, S_9
15	$V_{DC,1} + V_{DC,2} + V_{DC,3} + V_{DC,4}$	S_2, S_5, S_8

that these switches with higher blocking capability cannot be operated at fundamental switching frequency because the zero voltage level is not synthesized by the switched sources part, as can be observed from Table IV. It can also be inferred from the table that, with input sources of equal voltages, equal load sharing amongst them is possible as the sources can be combined in all additive configurations.

Hinago and Koizumi [55], [56] do not comment on the possibilities of asymmetric source configuration in this topology. Although the topology enables the synthesis of all additive combinations of the input sources, subtractive combinations are not possible. Hence, trinary source configuration cannot be employed this topology. Binary source configuration, however, is possible so as to maximize the number of levels in the output waveform. For example, in Fig. 9, for $V_{DC,1} = V_{DC}$, $V_{DC,2} = 2V_{DC}$, $V_{DC,3} = 4V_{DC}$ and $V_{DC,4} = 8V_{DC}$, it can be observed using Table IV that all the voltage levels from V_{DC} to $15V_{DC}$, in steps of V_{DC} , can be obtained as $v_{bus}(t)$ (with the respective use of states 1 to 15) so that the load voltage waveform has 15 levels.

D. SCSS-Based MLI

A topology with sources connected in series through power switches is described in the literature [57], [58]. The topology with four input dc sources $V_{DC,j}$ $\{j = 1 \text{ to } 4\}$ is shown in Fig. 10. The low potential terminals of the sources are all connected through power switches while being also connected to the higher potential terminal of the preceding source through power switches, as illustrated in Fig. 10 with S_j $\{j = 1 \text{ to } 8\}$. This interconnection is capable of synthesizing a multilevel rectified waveform $v_{bus}(t)$ (the level-generation part), which is imparted positive and negative polarities using the H-bridge comprising of switches Q_j $\{j = 1 \text{ to } 4\}$ (the polarity-generation part).

The possibilities of synthesizing various combinations of input dc levels are summarized in Table V. It can be seen that the structure, though simple, allows very restricted possibilities of synthesis of various levels at the bus end. In fact, not even the individual levels offered by the sources can all be

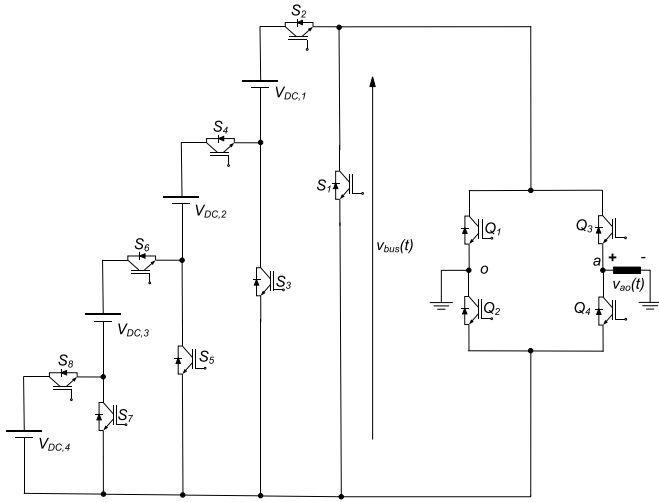


Fig. 10. SCSS-based MLI as proposed in [57] and [58].

 TABLE V
 VALID SWITCHING COMBINATIONS FOR THE "SCSS-MLI" SHOWN IN FIG. 10

State	$v_{bus}(t)$	Switches in ON state
1	$V_{DC,1}$	S_2, S_3
2	$V_{DC,1} + V_{DC,2}$	S_2, S_4, S_5
3	$V_{DC,1} + V_{DC,2} + V_{DC,3}$	S_2, S_4, S_6, S_7
4	$V_{DC,1} + V_{DC,2} + V_{DC,3} + V_{DC,4}$	S_2, S_4, S_6, S_8
5	0	S_1

obtained as $v_{bus}(t)$, except that of $V_{DC,1}$. Thus, this topology does not offer any possibility of employing asymmetric source configurations for further reducing the switch count. The source configuration mandatorily needs to be symmetric, i.e., $V_{DC,1} = V_{DC,2} = V_{DC,3} = V_{DC,4} = V_{DC}$. With such configuration, various switches would be differently voltage rated, that is to say, switches $Q_j \{j = 1 \text{ to } 4\}$ should be minimally rated at $4V_{DC}$, S_1 should be rated minimally at $4V_{DC}$, while S_3, S_5 , and S_7 should be minimally rated at $3V_{DC}, 2V_{DC}$, and V_{DC} , respectively. Moreover, as it can be observed from Table V, for symmetric input sources, equal load sharing is not possible as there are many combinations of input dc levels which are not feasible. Also, since the zero level can be obtained as $v_{bus}(t)$, the higher rated switches $Q_j \{j = 1 \text{ to } 4\}$ can be operated at the fundamental switching frequency.

E. CBSC-Based MLI

Babaei *et al.* in [59] introduced a new class of MLI topology, here referred to as "CBSC-based MLI." Fig. 11 shows the single-phase structure of the topology with four input voltage sources. The topology requires all the switches to be bidirectional-blocking-bidirectional-conducting in order to synthesize the required voltage levels at the output. The structure is such that each "cell" consisting of a source and power switches can synthesize voltage levels with both its polarities at the load terminals. Although each bidirectional switch requires two IGBTs, the total number of gate drive circuits is equal to the number of

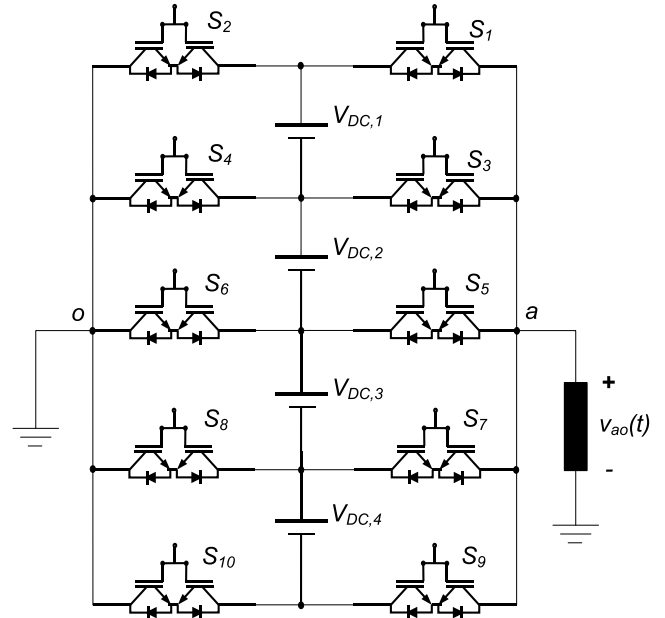


Fig. 11. CBSC-based MLI as proposed in [59].

 TABLE VI
 VALID SWITCHING COMBINATIONS FOR THE CBSC-MLI SHOWN IN FIG. 11

State	Output voltage [$v_{ao}(t)$]	Switches in ON state
1	$V_{DC,1}$	S_1, S_4
2	$V_{DC,2}$	S_3, S_6
3	$V_{DC,3}$	S_5, S_8
4	$V_{DC,4}$	S_7, S_{10}
5	$V_{DC,1} + V_{DC,2}$	S_1, S_6
6	$V_{DC,2} + V_{DC,3}$	S_3, S_8
7	$V_{DC,3} + V_{DC,4}$	S_5, S_{10}
8	$V_{DC,1} + V_{DC,2} + V_{DC,3}$	S_1, S_8
9	$V_{DC,2} + V_{DC,3} + V_{DC,4}$	S_3, S_{10}
10	$V_{DC,1} + V_{DC,2} + V_{DC,3} + V_{DC,4}$	S_1, S_{10}
11	$-V_{DC,1}$	S_2, S_3
12	$-V_{DC,2}$	S_4, S_5
13	$-V_{DC,3}$	S_6, S_7
14	$-V_{DC,4}$	S_8, S_9
15	$-(V_{DC,1} + V_{DC,2})$	S_2, S_5
16	$-(V_{DC,2} + V_{DC,3})$	S_4, S_7
17	$-(V_{DC,3} + V_{DC,4})$	S_6, S_9
18	$-(V_{DC,1} + V_{DC,2} + V_{DC,3})$	S_2, S_7
19	$-(V_{DC,2} + V_{DC,3} + V_{DC,4})$	S_4, S_9
20	$-(V_{DC,1} + V_{DC,2} + V_{DC,3} + V_{DC,4})$	S_2, S_9
21	0	S_9, S_{10}
22	0	S_1, S_2

bidirectional switches. This results in reducing the cost and overall complexity of the converter.

The valid switching states for all possible combination of input voltage sources are given in Table VI. It should also be noted that the topology can only work with a symmetric source configuration. Asymmetric source configurations (binary or trinary) are not possible, since many subtractive and additive combinations of the input dc levels cannot be synthesized. Considering a symmetric source configuration with all input sources equal to V_{DC} , it can be observed that while synthesizing $2V_{DC}$ and $-2V_{DC}$, not all possible combinations of input voltage sources

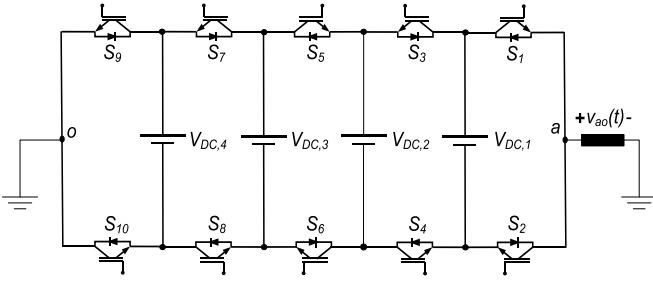


Fig. 12. PUC MLI topology as proposed in [60]–[64].

are utilized. Similar is the case for synthesis of voltage levels $3V_{DC}$ and $-3V_{DC}$. As a result, equal utilization of the input voltage sources is not possible in this topology. Moreover, outermost bidirectional switches S_1 , S_2 , S_9 , and S_{10} need to have minimum voltage blocking capability of $4V_{DC}$ each. On the other hand, the inner switches S_3 , S_4 , S_7 , and S_8 need to have minimum voltage blocking capability of $3V_{DC}$. Similarly, switches S_5 and S_6 need to bear a voltage stress of $2V_{DC}$. One can also observe that for synthesizing each voltage level, only two switches need to conduct simultaneously. This may result in equal conduction and switching losses. In addition, the topology requires nonisolated dc sources.

F. PUC Topology

In [60]–[64], Ounejjar *et al.* proposed a new power multi-level converter topology that is very competitive compared to the classical topologies. The topology is named as the “PUC” topology. It consists of the so-called “packed U-cells.” Each U-cell consists of an arrangement of two power switches and one dc input level (obtained with a voltage source or a floating capacitor). Authors claim that the topology offers high energy conversion quality using a small number of active and passive devices and consequently, has very low production cost. A single-phase structure of the packed U-cell topology with four input dc levels, $V_{DC,j} \{j = 1 \text{ to } 4\}$, and ten switches $S_j \{j = 1 \text{ to } 10\}$, is shown in Fig. 12.

The PUC topology is very simple in terms of interconnection of components. The minimal voltage blocking capability required for the switches are: $V_{DC,1}$ for S_1 and S_2 , $(V_{DC,1} - V_{DC,2})$ for S_3 and S_4 , $(V_{DC,2} - V_{DC,3})$ for S_5 and S_6 , $(V_{DC,3} - V_{DC,4})$ for S_7 and S_8 , and $V_{DC,4}$ for S_9 and S_{10} . All the switches, when conducting, should be able to carry the load current. Various valid states for the structure are shown in Table VII. Thus, with four input levels, only five switches conduct simultaneously to obtain a desired voltage level. It is important to observe from Table VII that to derive desired benefit from the topology, symmetric source configuration cannot be used.

In fact, in [64], the authors have proposed an elaborate methodology to calculate the asymmetric voltage levels. For a structure with two input sources, switching of middle two switches can be performed at fundamental frequency as demonstrated in [64]. This feature, however, is not feasible for the PUC topology with more than two number of input dc levels. In [64], the authors have described the PUC topology with two input

TABLE VII
VALID SWITCHING STATES FOR THE PUC TOPOLOGY SHOWN IN FIG. 12

State	Output voltage $v_{ao}(t)$	Switches in ON state
1	0	S_1, S_3, S_5, S_7, S_9
2	0	$S_2, S_4, S_6, S_8, S_{10}$
3	$V_{DC,1}$	$S_1, S_4, S_6, S_8, S_{10}$
4	$-V_{DC,1}$	S_2, S_3, S_5, S_7, S_9
5	$V_{DC,2}$	S_1, S_3, S_4, S_6, S_8
6	$-V_{DC,2}$	S_2, S_4, S_5, S_7, S_9
7	$V_{DC,3}$	$S_1, S_3, S_5, S_8, S_{10}$
8	$-V_{DC,3}$	S_2, S_4, S_6, S_7, S_9
9	$V_{DC,4}$	$S_1, S_3, S_5, S_7, S_{10}$
10	$-V_{DC,4}$	S_2, S_4, S_6, S_8, S_9
11	$V_{DC,4} - V_{DC,3}$	$S_2, S_4, S_6, S_7, S_{10}$
12	$-(V_{DC,4} - V_{DC,3})$	S_1, S_3, S_5, S_8, S_9
13	$V_{DC,3} - V_{DC,2}$	$S_2, S_4, S_5, S_8, S_{10}$
14	$-(V_{DC,3} - V_{DC,2})$	S_1, S_3, S_6, S_7, S_9
15	$V_{DC,4} - V_{DC,3} + V_{DC,2}$	S_2, S_4, S_5, S_8, S_9
16	$-(V_{DC,4} - V_{DC,3} + V_{DC,2})$	$S_1, S_3, S_6, S_7, S_{10}$
17	$V_{DC,4} - V_{DC,2}$	$S_2, S_4, S_5, S_7, S_{10}$
18	$-(V_{DC,4} - V_{DC,2})$	S_1, S_3, S_6, S_8, S_9
19	$V_{DC,2} - V_{DC,1}$	$S_2, S_3, S_6, S_8, S_{10}$
20	$-(V_{DC,2} - V_{DC,1})$	S_1, S_4, S_5, S_7, S_9
21	$V_{DC,4} - V_{DC,2} + V_{DC,1}$	S_2, S_3, S_6, S_8, S_9
22	$-(V_{DC,4} - V_{DC,2} + V_{DC,1})$	$S_1, S_4, S_5, S_7, S_{10}$
23	$V_{DC,1} - V_{DC,2} + V_{DC,3} - V_{DC,4}$	$S_2, S_3, S_6, S_7, S_{10}$
24	$-(V_{DC,1} - V_{DC,2} + V_{DC,3} - V_{DC,4})$	S_1, S_4, S_5, S_8, S_9
25	$V_{DC,1} - V_{DC,2} + V_{DC,3}$	S_2, S_3, S_6, S_7, S_9
26	$-(V_{DC,1} - V_{DC,2} + V_{DC,3})$	$S_1, S_4, S_5, S_8, S_{10}$
27	$V_{DC,1} - V_{DC,3}$	$S_2, S_3, S_5, S_8, S_{10}$
28	$-(V_{DC,1} - V_{DC,3})$	S_1, S_4, S_6, S_7, S_9
29	$V_{DC,1} - V_{DC,3} + V_{DC,4}$	S_2, S_3, S_5, S_8, S_9
30	$-(V_{DC,1} - V_{DC,3} + V_{DC,4})$	$S_1, S_4, S_6, S_7, S_{10}$
31	$V_{DC,1} - V_{DC,4}$	$S_2, S_3, S_5, S_7, S_{10}$
32	$-(V_{DC,1} - V_{DC,4})$	S_1, S_4, S_6, S_8, S_9

sources. One source is taken as a floating capacitor in which the voltage is maintained at one-third of the voltage level of the other source (obtained with the rectification of input ac). The control scheme, though, is fairly complex in nature.

G. MLM-Based MLI

Babaei [65] presented another multilevel converter topology, known as “MLM”-based MLI. The topology consists of separate “level-generation” and “polarity-generation” parts. The level-generation part consists of input dc sources and bidirectional-blocking-bidirectional-conducting switches. The voltage stress on these switches is not distributed uniformly. The switches in the polarity-generation part are unidirectional-blocking-bidirectional-conducting and have to withstand the maximum voltage generated by the level generation part. However, these switches can be operated at line frequency as the level generation part is able to generate the zero level. Thus, these switches are high-voltage low-frequency switches.

A single-phase MLM-MLI with four input sources is shown in Fig. 13. All the valid operating states are listed in Table VIII. The proposed topology does not facilitate asymmetrical source configuration (binary or trinary) because it is not possible to synthesize all subtractive and additive combination of the input voltage levels. For $V_{DC,1} = V_{DC,2} = V_{DC,3} = V_{DC,4} = V_{DC}$, it is evident that all the possible combinations of the input

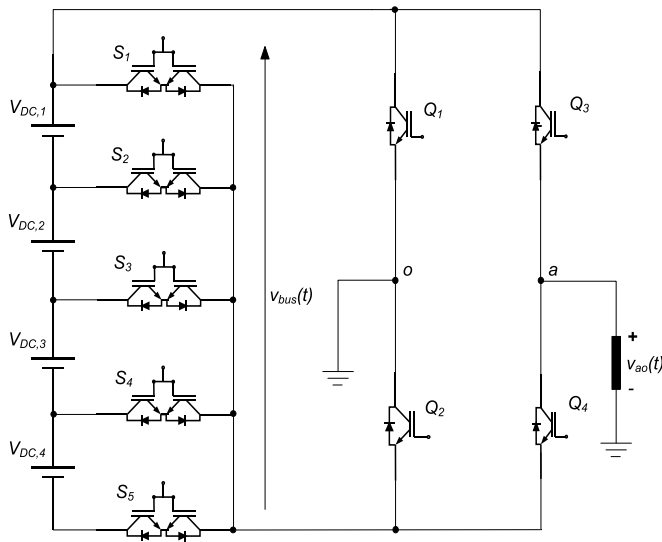


Fig. 13. MLM-based MLI as proposed in [65].

 TABLE VIII
 VALID SWITCHING COMBINATIONS FOR THE “MLM-MLI” SHOWN IN FIG. 13

State	$v_{bus}(t)$	Switches in ON state
1	$V_{DC,1}$	S_2
2	$V_{DC,1} + V_{DC,2}$	S_3
3	$V_{DC,3} + V_{DC,4}$	S_1, S_3, S_5
4	$V_{DC,1} + V_{DC,2} + V_{DC,3}$	S_4
5	$V_{DC,1} + V_{DC,2} + V_{DC,3} + V_{DC,4}$	S_5
6	0	S_1

voltage levels are not utilized. Thus in this topology, equal load sharing amongst the input sources is not possible. Also, the switches in the polarity-generation part are subjected to the voltage stress of $4V_{DC}$ each. For the level-generation part, switches S_1 and S_5 need to have minimum voltage blocking capability of $4V_{DC}$ whereas switches S_2 and S_4 should be selected to bear the voltage stress of $3V_{DC}$. Switch S_3 needs to bear voltage stress of $2V_{DC}$. However, only one switch in the level-generation part and two switches in the polarity-generation part need to conduct simultaneously to synthesize the required voltage level at the output.

H. RV Topology

In [66] and [67], Najafi *et al.* have proposed a so-called “reversing voltage” MLI (RV-MLI) topology which separates the output voltage into two parts: “level-generation” and “polarity-generation.” A single-phase RV-MLI with four input dc sources, $V_{DC,j}$ $\{j = 1$ to $4\}$, is shown in Fig. 14. The level-generation part comprises of the input dc sources and switches S_j $\{j = 1$ to $8\}$. The polarity-generation part consists of switches Q_j $\{j = 1$ to $8\}$, operating at the line frequency. In this way, the components are utilized effectively. The switches in the polarity-generation part need to withstand the total additive voltage of the level generation part. The topology exhibits modularity for the level generation part.

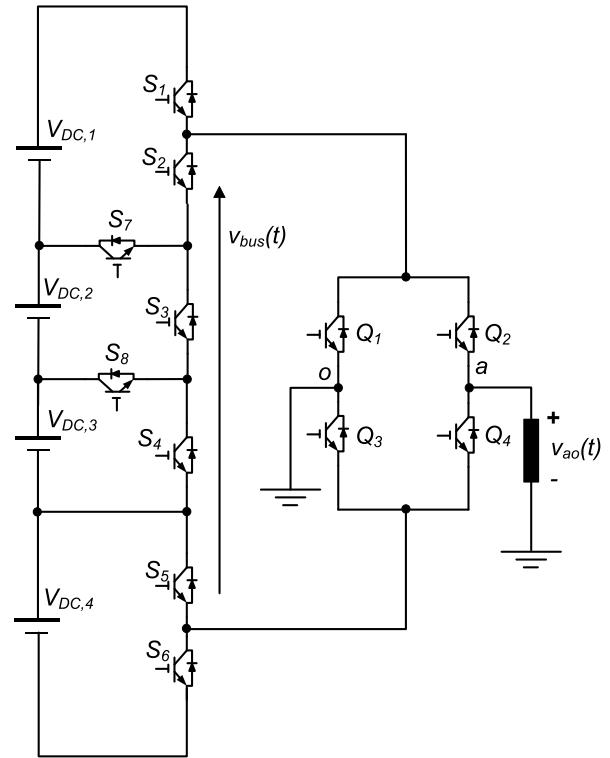


Fig. 14. RV topology as proposed in [66] and [67].

 TABLE IX
 VALID SWITCHING COMBINATIONS FOR THE “RV TOPOLOGY” SHOWN IN FIG. 14

State	$v_{bus}(t)$	Switches in ON state
1	$V_{DC,1}$	S_1, S_3, S_4, S_5, S_7
2	$V_{DC,3}$	S_2, S_3, S_5, S_8
3	$V_{DC,4}$	S_2, S_3, S_4, S_6
4	$V_{DC,1} + V_{DC,2}$	S_1, S_4, S_5, S_8
5	$V_{DC,2} + V_{DC,3}$	S_2, S_5, S_7
6	$V_{DC,3} + V_{DC,4}$	S_2, S_3, S_6, S_8
7	$V_{DC,1} + V_{DC,4}$	S_1, S_3, S_4, S_6, S_7
8	$V_{DC,1} + V_{DC,2} + V_{DC,3}$	S_1, S_5
9	$V_{DC,2} + V_{DC,3} + V_{DC,4}$	S_2, S_6, S_7
10	$V_{DC,1} + V_{DC,2} + V_{DC,3} + V_{DC,4}$	S_1, S_6
11	0	S_2, S_3, S_4, S_5

To overcome the issue of voltage balancing, authors in [66] and [67] have proposed use of separate dc sources. It is, however, true for several topologies that separate sources can solve the voltage unbalance problem. If separate sources are not used, balancing will have to be achieved by proper utilization of redundant states. Various valid states for possible combinations of input sources so as to obtain different levels at the level generation part, $v_{bus}(t)$, are summarized in Table IX. It can be noted that the switches with high blocking voltages, Q_j $\{j = 1$ to $4\}$, can be operated at fundamental switching frequency as the zero level voltage can be synthesized at the level generation part itself. If symmetric sources are used such that $V_{DC,1} = V_{DC,2} = V_{DC,3} = V_{DC,4} = V_{DC}$, then all switches of the level generation part experience a voltage stress of V_{DC} ,

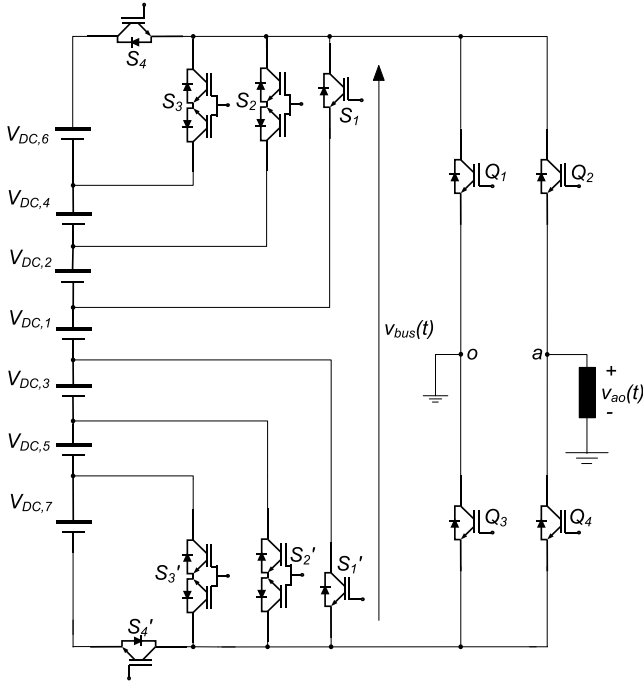


Fig. 15. 2SELG-based MLI as proposed in [68].

while the four switches of the polarity generation part are required to have minimum voltage blocking capability of $4V_{DC}$ each. It can also be inferred from Table IX that for a symmetric source configuration, equal load sharing amongst them is not possible as all source combinations cannot be employed for various cycles of output voltage. For a dc link created with connected capacitors, this limitation will affect voltage balancing in the capacitors. It can also be observed from Table IX that the number of switches conducting simultaneously to synthesize various voltage levels is not same for all the states and thus, conduction losses and switching losses for the switches may not be same. Moreover, since the topology does not facilitate the synthesis of all additive and subtractive combinations of input voltage sources, trinary source combination cannot be implemented with this topology.

Employing other asymmetric combinations to maximize the number of output levels is seriously hampered by the absence of some states with a single voltage source. However, one important advantage of the topology is that it uses a single dc link for three-phase implementation, thereby offering savings in the number of input voltage sources.

I. Two-Switch-Enabled Level Generation (2SELG)-Based MLI

The topology presented by Babaei in [68] has separate “level-generation” and “polarity-generation” parts. The specialty of this topology is that the level-generation part requires only two conducting switches to synthesize any valid voltage level, irrespective of the number of input sources. Therefore, this topology is referred to as “2SELG-based MLI.” A single-phase configuration of 2SELG-MLI with seven input levels, $V_{DC,j}$ $\{j = 1 \text{ to } 7\}$, is shown in Fig. 15.

TABLE X
VALID SWITCHING STATES FOR THE “2SELG-MLI” SHOWN IN FIG. 15

State	$v_{bus}(t)$	Switches in ON state
1	$V_{DC,1}$	S_1, S'_1
2	$V_{DC,1} + V_{DC,2}$	S_2, S'_1
3	$V_{DC,1} + V_{DC,2} + V_{DC,3}$	S_2, S'_2
4	$V_{DC,1} + V_{DC,2} + V_{DC,3} + V_{DC,4}$	S_3, S'_2
5	$V_{DC,1} + V_{DC,2} + V_{DC,3} + V_{DC,4} + V_{DC,5} + V_{DC,6}$	S_3, S'_3
6	$V_{DC,1} + V_{DC,2} + V_{DC,3} + V_{DC,4} + V_{DC,5} + V_{DC,6}$	S_4, S'_3
7	$V_{DC,1} + V_{DC,2} + V_{DC,3} + V_{DC,4} + V_{DC,5} + V_{DC,6} + V_{DC,7}$	S_4, S'_4

The topology requires a mix of unidirectional and bidirectional switches. The valid switching states are shown in Table X. It can be seen that the level-generation part is unable to realize the zero level by itself. The switches of the polarity-generation part, therefore, cannot operate with a fundamental switching frequency.

For a symmetrical source configuration, $V_{DC,1} = V_{DC,2} = V_{DC,3} = V_{DC,4} = V_{DC,5} = V_{DC,6} = V_{DC,7} = V_{DC}$, it is not possible to apply the concept of “even power distribution” in this topology, as all the sources do not contribute equally for each level in the $v_{bus}(t)$. Also, the switches in the polarity-generation part need to have minimum voltage blocking capability of $7V_{DC}$. Switches $S_1, S_4, S'_1,$ and S'_4 need to have minimum voltage blocking capability of $3V_{DC}$. Rest of the switches need to have minimum voltage blocking capability of $2V_{DC}$. It is also observed that this topology does not support asymmetrical source configuration (binary or trinary) as it is not possible to synthesize all subtractive and additive combinations of the input voltage levels. However, one advantage offered by 2SELG-MLI is that a total of four power electronic switches need to be conducting in all the switching states, thus resulting in lower conduction losses.

IV. DISCUSSIONS

Based on the analysis of RDC-MLI topologies presented in the previous section, comments can be made on them based on qualitative and quantitative parameters. Based on the qualitative features of these topologies, a summary is presented in Table XI. MLDCL-MLI is a highly modular structure whereas the PUC topology can be appreciated for its sheer simplicity in terms of its structure. Both the topologies, however, require isolated dc sources. SSPS-MLI presents novelty in terms of enabling series and parallel combinations of all the input dc levels. Structures such as T-type inverter, CBSC-MLI, MLM-MLI, and RV topology require nonisolated input dc levels. Also, three-phase configurations with the T-type inverter and RV topology can be implemented with a single dc link. An important feature of 2SELG-MLI is that only four switches need to conduct to obtain a given voltage level across the load terminals. It can be said that when attempts are made to reduce the power switch count, the number of states are reduced and following features may be hampered: even power distribution among the symmetric

TABLE XI
ADVANTAGES AND LIMITATIONS OF RDC-MLI TOPOLOGIES

Topology	Literature	Advantages	Limitations
MLDCL-MLI	Proposed in [50], [51]	<ul style="list-style-type: none"> • Highly modular and simple • Requires only unidirectional switches • Equal load sharing is possible amongst symmetric input sources • Highest voltage rated switches can be operated at fundamental switching frequency. 	<ul style="list-style-type: none"> • Requires isolated input dc levels • Trinary source configuration cannot be employed.
T-type MLI	Proposed in [52]–[54]	<ul style="list-style-type: none"> • Simple structure • Requires nonisolated input dc levels 	<ul style="list-style-type: none"> • Requires a mix of unidirectional and bidirectional switches, • Equal load sharing is not possible, asymmetric source configuration is not possible • Highest voltage rated switches cannot be operated at fundamental switching frequency
SSPS-MLI	Proposed in [55], [56]	<ul style="list-style-type: none"> • Input dc sources can be combined in both series and parallel • Equal load sharing is possible amongst input dc sources • Binary source configuration can be employed 	<ul style="list-style-type: none"> • Highest voltage rated switches cannot be operated at fundamental switching frequency • Trinary source configuration cannot be employed
SCSS-MLI	Proposed in [57], [58]	<ul style="list-style-type: none"> • Simple structure • Highest voltage rated switches can be operated at fundamental switching frequency 	<ul style="list-style-type: none"> • Symmetric source configuration is mandatory • Power switches are differently voltage-rated
CBSC-MLI	Proposed in [59]	<ul style="list-style-type: none"> • Nonisolated input dc levels are required • All switches are bidirectional • Only two switches conduct simultaneously to synthesize a given voltage level 	<ul style="list-style-type: none"> • Equal load sharing is not possible • Equal load sharing is not possible • Asymmetry is not possible, • Switches are differently voltage rated
PUC Topology	Proposed in [60]–[64]	<ul style="list-style-type: none"> • Simple structure • Low losses 	<ul style="list-style-type: none"> • Sources need to be mandatorily asymmetric • Complex control
MLM-MLI	Proposed in [65]	<ul style="list-style-type: none"> • Requires nonisolated dc sources • Simple structure • Highest voltage rated switches can be operated at fundamental frequency 	<ul style="list-style-type: none"> • Requires a mix of unidirectional and bidirectional switches • Equal load sharing is not possible • Asymmetric source configuration not possible
RV Topology	Proposed in [66], [67]	<ul style="list-style-type: none"> • Requires nonisolated dc sources • Single dc link feeds all the three phases • Highest voltage rated switches can be operated at fundamental switching frequency 	<ul style="list-style-type: none"> • Equal load sharing is not possible • Asymmetric source configuration is not possible
2SELG-MLI	Proposed in [68]	<ul style="list-style-type: none"> • Requires nonisolated input dc levels • Low conduction losses 	<ul style="list-style-type: none"> • Equal load sharing is not possible • asymmetric sources cannot be employed • Highest voltage rated switches cannot be operated at fundamental frequency

input sources and possibility of employing binary/trinary source configuration(s). The topologies with isolated input dc sources can be used for applications such renewable energy and battery-operated vehicles whereas topologies with a single dc link can be appropriate for ac–dc–ac-based applications.

Topologies with separate level-generation and polarity-generation parts, however, may find restrictions for high-voltage applications because the power switches in the polarity-generation part need to block the total input voltage. Table XI can be helpful for identifying suitable topology/topologies for the mandated application when design restrictions (availability/nonavailability of isolated dc sources) and performance characteristics (e.g. requirement of even power distribution) are given.

Quantitative features of RDC-MLI topologies are summarized in Table XII in terms of the count of power switches for three-phase applications and total blocking voltage requirements. In Table XII, the “classical topologies” are also included. All the topologies are considered with symmetric input sources. Consequently, the PUC topology does not appear

in Table XII since it mandatorily requires asymmetric sources. It can be observed from Table XII that some topologies require a mix of unidirectional and bidirectional power switches. Some topologies require power switches with a variety of voltage ratings. Both these factors present difficulty in the converter design. In addition, a general trend that can be observed is that as an attempt is made to reduce the power switch count, the voltage ratings of converter switches increase. Table XII along with Table XI can be used to choose an appropriate topology with the calculations of total number of power switches with their respective voltage ratings. Thus, an estimation of overall cost consideration can be arrived at.

V. CONCLUSION

As MLIs continue to gain increasing importance for both high power and low power applications, many researchers have proposed specific topological solutions for intended applications. Also, newer multilevel topologies have been proposed, offering high output resolution with a reduced number of power switches.

TABLE XII
COMPARISON OF THREE-PHASE MLIS (“CLASSICAL TOPOLOGIES” AND “REDUCED DEVICE COUNT” TOPOLOGIES) (n_{levels} = NUMBER OF LEVELS IN PHASE VOLTAGE)

Topology	Literature	Number of Unidirectional Switches*	Number of Bidirectional Switches**	Total Blocking Voltage Requirement [p.u.]
NPC-MLI	Proposed in [22]	$6(n_{levels} - 1)$	0	$6[(n_{levels} - 1)]$
FC-MLI	Proposed in [23, 24]	$6(n_{levels} - 1)$	0	$6[(n_{levels} - 1)]$
CHB-MLI	Proposed in [20]	$6(n_{levels} - 1)$	0	$6[(n_{levels} - 1)]$
MLDCL-MLI	Proposed in [50,51]	$3(n_{levels} + 3)$	0	$9[(n_{levels} - 1)]$
T-Type Inverter	Proposed in [52-54]	12	$3(n_{levels} - 1)$	$3 \left[2(n_{levels} - 1) + \sum_{k=1}^{(n_{levels}-3)/4} (n_{levels} - (2k + 1)) \right],$ when number of sources is odd. $3 \left[\frac{9(n_{levels} - 1)}{4} + \sum_{k=1}^{(n_{levels}-5)/4} (n_{levels} - (2k + 1)) \right],$ when number of sources is even.
SSPS-MLI	Proposed in [55,56]	$\frac{3(3n_{levels} - 1)}{2}$	0	$\frac{3[(7n_{levels} - 13)]}{2}$
SCSS-MLI	Proposed in [57,58]	$3(n_{levels} + 3)$	0	$3[(3n_{levels} - 2) + \sum_{k=2}^{(n_{levels}-3)/2} k]$
CBSC-MLI	Proposed in [59]	0	$3(n_{levels} + 1)$	$3 \left[\frac{(n_{levels} + 1)(3n_{levels} - 1)}{8} \right],$ when number of sources is odd. $3 \left[\frac{(n_{levels} - 1)(3n_{levels} + 5)}{8} \right],$ When number of sources is even.
MLM-MLI	Proposed in [65]	12	$\frac{3(n_{levels} + 1)}{2}$	$3 \left[3(n_{levels} - 1) + \sum_{k=1}^{(n_{levels}-3)/4} \{n_{levels} - (2k + 1)\} \right],$ when number of sources is odd. $3 \left[\frac{13(n_{levels} - 1)}{4} + \sum_{k=1}^{(n_{levels}-5)/4} \{n_{levels} - (2k + 1)\} \right],$ when number of sources is even.
RV Topology	Proposed in [66,67]	$3(n_{levels} + 3)$	0	$9(n_{levels} - 1)$
2SELG-MLI	Proposed in [68]	24	$\frac{3(n_{levels} - 7)}{2}$	$V_o + 4n; n = \frac{(n_{levels} - 1)}{2}, \text{ where,}$ $V_o = \begin{cases} \frac{3n^2 + 8n + 5}{5} & \text{when } n \text{ is odd and } \frac{n-1}{2} \text{ is even} \\ \frac{3n^2 + 8n + 5}{5} & \text{when } n \text{ is odd and } \frac{n-1}{2} \text{ is odd} \\ \frac{3n^2 + 8n + 1}{5} & \text{when } n \text{ is even and } \frac{n}{2} \text{ is odd} \\ \frac{3n^2 + 8n}{5} & \text{when } n \text{ is even and } \frac{n}{2} \text{ is even} \end{cases}$

*Bidirectional-conducting-unidirectional-blocking **Bidirectional-conducting-bidirectional-blocking

In this paper, a review of nine reduce device count multilevel topologies is presented. Based on the review, it can be concluded that in the process of reducing the power switch count, various compromises are involved such as:

- 1) increased voltage rating of semiconductor switches;
- 2) requirement of bidirectional switches;
- 3) increased number of sources and/or requirement of asymmetric input dc levels;
- 4) loss of modularity;
- 5) reduced number of redundant states;
- 6) complex modulation/control schemes;
- 7) difficulty in possibility of charge balance control.

In this paper, qualitative and quantitative features of RDC-MLI topologies have been discussed and a comparison has been made so as to facilitate a well-informed selection of topology for a given application. In addition, the paradigm presented in the paper will also help to evaluate the RDC-MLI topologies that will be proposed in future.

REFERENCES

- [1] J. R. Espinoza, "Inverters," *Power Electronics Handbook*, M.H. Rashid, Ed. New York, NY, USA: Elsevier, 2001, pp. 225–269.
- [2] D. Abbott, "Keeping the energy debate clean: how do we supply the world's energy needs?" *Proc. IEEE*, vol. 98, no. 1, pp. 42–66, Jan. 2010.
- [3] Y. Xinghuo, C. Cecati, T. Dillon, and M. G. Simões, "The new frontier of smart grids," *IEEE Ind. Electron. Mag.*, vol. 5, no. 3, pp. 49–63, Sep. 2011.
- [4] S. Daher, "Analysis, design and implementation of a high efficiency multilevel converter for renewable energy systems," Ph.D. Dissertation, Dept. Elect. Eng. Comput. Sci., Kassel University, Kassel, Germany, 2006. Available: <http://www.uni-kassel.de/upress/online/frei/978-3-89958-236-9.volltext.frei.pdf>
- [5] L. G. Franquelo, J. Rodriguez, J. I. Leon, S. Kouro, R. Portillo, and M. A. M. Prats, "The age of multilevel converters arrives," *IEEE Ind. Electron. Mag.*, vol. 2, no. 2, pp. 28–39, Jun. 2008.
- [6] J. Rodriguez, L. G. Franquelo, S. Kouro, J. I. Leon, R. C. Portillo, M. A. M. Prats, and M. A. Perez, "Multilevel converters: An enabling technology for high-power applications," *Proc. IEEE*, vol. 97, no. 11, pp. 1786–1817, Nov. 2009.
- [7] J. Rodriguez, S. Bernet, B. Wu, J. O. Pontt, and S. Kouro, "Multi-level voltage-source-converter topologies for industrial medium-voltage drives," *IEEE Trans. Ind. Electron.*, vol. 54, no. 6, pp. 2930–2945, Dec. 2007.
- [8] C. M. Young, N. Y. Chu, L. R. Chen, Y. C. Hsiao, and C. Z. Li, "A single-phase multilevel inverter with battery balancing," *IEEE Trans. Ind. Electron.*, vol. 60, no. 5, pp. 1972–1978, May 2013.
- [9] M. A. Parker, R. Li, and S. J. Finney, "Distributed control of a fault-tolerant modular multilevel inverter for direct-drive wind turbine grid interfacing," *IEEE Trans. Ind. Electron.*, vol. 60, no. 2, pp. 509–522, Feb. 2013.
- [10] S. Debnath, J. Qin, B. Bahrani, M. Saeedifard, and P. Barbosa, "Operation, control, and applications of the modular multilevel converter: A review," *IEEE Trans. Power Electron.*, vol. 30, no. 1, pp. 37–53, Jan. 2015.
- [11] R. H. Baker and L. H. Bannister, "Electric power converter," U.S. Patent 3 867 643, 1975.
- [12] R. H. Baker, "Switching circuit," U.S. Patent 4210826, 1980.
- [13] A. Nabae, I. Takahashi, and H. Akagi, "A neutral-point-clamped PWM inverter," in *Proc. Conf. Rec. IEEE IAS Annual Meet.*, Cincinnati, OH, USA, Sep. 28–Oct. 3, 1980, vol. 3, pp. 761–766.
- [14] T. A. Meynard and H. Foch, "Multi-level conversion: High voltage choppers and voltage-source inverters," in *Proc. IEEE Power Electron. Spec. Conf.*, 1992, pp. 397–403.
- [15] J. P. Lavierville, P. Carrere, and T. Meynard, "Electronic circuit for converting electrical energy and a power supply installation making use thereof," U.S. Patent 5 668 711, 1997.
- [16] E. Villanueva, P. Correa, J. Rodriguez, and M. Pacas, "Control of a single-phase cascaded h-bridge multilevel inverter for grid-connected photovoltaic systems," *IEEE Trans. Ind. Electron.*, vol. 56, no. 11, pp. 4399–4406, Nov. 2009.
- [17] J. A. Barrena, L. Marroyo, M. A. R. Vidal, and J. R. T. Apraiz, "Individual voltage balancing strategy for PWM cascaded H-bridge converter-based STATCOM," *IEEE Trans. Ind. Electron.*, vol. 55, no. 1, pp. 21–29, Jan. 2008.
- [18] M.A. Perez, P. Cortes, and J. Rodriguez, "Predictive control algorithm technique for multilevel asymmetric cascaded H-bridge inverters," *IEEE Trans. Ind. Electron.*, vol. 55, no. 12, pp. 4354–4361, Dec. 2008.
- [19] S. Vazquez, J. I. Leon, J. M. Carrasco, L. G. Franquelo, E. Galvan, M. Reyes, J. A. Sanchez, and E. Dominguez, "Analysis of the power balance in the cells of a multilevel cascaded H-bridge converter," *IEEE Trans. Ind. Electron.*, vol. 57, no. 7, pp. 2287–2296, Jul. 2010.
- [20] Y. Li and B. Wu, "A novel DC voltage detection technique in the CHB inverter-based STATCOM," *IEEE Trans. Power Delivery*, vol. 23, no. 3, pp. 1613–1619, Jul. 2008.
- [21] M. M. Renge and H. M. Suryawanshi, "Five-level diode clamped inverter to eliminate common mode voltage and reduce dv/dt in medium voltage rating induction motor drives," *IEEE Trans. Power Electron.*, vol. 23, no. 4, pp. 1598–1607, Jul. 2008.
- [22] R. Rabinovici, D. Baimel, J. Tomasik, and A. Zuckerberger, "Series space vector modulation for multi-level cascaded H-bridge inverters," *IET Power Electron.*, vol. 3, no. 6, pp. 843–857, Nov. 2010.
- [23] M. Marchesoni and P. Tenca, "Diode-clamped multilevel converters: A practicable way to balance DC-link voltages," *IEEE Trans. Ind. Electron.*, vol. 49, no. 4, pp. 752–765, Aug. 2002.
- [24] J. Pou, R. Pindado, and D. Boroyevich, "Voltage-balance limits in four-level diode-clamped converters with passive front ends," *IEEE Trans. Ind. Electron.*, vol. 52, no. 1, pp. 190–196, Feb. 2005.
- [25] A. Yazdani and R. Iravani, "A neutral-point clamped converter system for direct-drive variable-speed wind power unit," *IEEE Trans. Energy Convers.*, vol. 21, no. 2, pp. 596–607, Jun. 2006.
- [26] P. Zhiguo, F. Z. Peng, K. A. Corzine, V. R. Stefanovic, J. M. Leuthen, and S. Gataric, "Voltage balancing control of diode-clamped multilevel rectifier/inverter systems," *IEEE Trans. Ind. Appl.*, vol. 41, no. 6, pp. 1698–1706, Nov.–Dec. 2005.
- [27] H. Akagi and T. Hatada, "Voltage balancing control for a three-level diode-clamped converter in a medium-voltage transformerless hybrid active filter," *IEEE Trans. Power Electron.*, vol. 24, no. 3, pp. 571–579, Mar. 2009.
- [28] A. Bendre, S. Krstic, J. Vander Meer, and G. Venkataramanan, "Comparative evaluation of modulation algorithms for neutral-point-clamped converters," *IEEE Trans. Ind. Appl.*, vol. 41, no. 2, pp. 634–643, Mar.–Apr. 2005.
- [29] K. Xiaomin, K. A. Corzine, and Y. L. Familant, "A unique fault-tolerant design for flying capacitor multilevel inverter," *IEEE Trans. Power Electron.*, vol. 19, no. 4, pp. 979–987, Jul. 2004.
- [30] C. Feng, J. Liang, and V. G. Agelidis, "Modified phase-shifted PWM control for flying capacitor multilevel converters," *IEEE Trans. Power Electron.*, vol. 22, no. 1, pp. 178–185, Jan. 2007.
- [31] P. Lezana, R. Aguilera, and D. E. Quevedo, "Model predictive control of an asymmetric flying capacitor converter," *IEEE Trans. Ind. Electron.*, vol. 56, no. 6, pp. 1839–1846, Jun. 2009.
- [32] A. Shukla, A. Ghosh, and A. Joshi, "Improved multilevel hysteresis current regulation and capacitor voltage balancing schemes for flying capacitor multilevel inverter," *IEEE Trans. Power Electron.*, vol. 23, no. 2, pp. 518–529, Mar. 2008.
- [33] J. Huang and K. A. Corzine, "Extended operation of flying capacitor multilevel inverters," *IEEE Trans. Power Electron.*, vol. 21, no. 1, pp. 140–147, Jan. 2006.
- [34] M. Khazraei, H. Sepahvand, K. A. Corzine, and M. Ferdowsi, "Active capacitor voltage balancing in single-phase flying-capacitor multilevel power converters," *IEEE Trans. Ind. Electron.*, vol. 59, no. 2, pp. 769–778, Feb. 2012.
- [35] V. G. Agelidis, D. M. Baker, W. B. Lawrance, and C. V. Nayar, "A multilevel PWM inverter topology for photovoltaic applications," in *Proc. IEEE Int. Symp. Ind. Electron.*, Jul. 7–11, 1997, vol. 2, pp. 589–594+.
- [36] M. D. Manjrekar and T. A. Lipo, "A hybrid multilevel inverter topology for drive applications," in *Proc. 13th Annu. Appl. Power Electron. Conf. Expo.*, Feb. 15–19, 1998, vol. 2, pp. 523–529, vol. 2.
- [37] Y. Xiaoming and I. Barbi, "Fundamentals of a new diode clamping multilevel inverter," *IEEE Trans. Power Electron.*, vol. 15, no. 4, pp. 711–718, Jul. 2000.
- [38] Y. Cheng and M. L. Crow, "A diode-clamped multi-level inverter for the StatCom/BESS," in *Proc. IEEE Power Eng. Soc. Winter Meet.*, 2002, vol. 1, pp. 470–475.
- [39] S. Mariethoz and A. Rufer, "New configurations for the three-phase asymmetrical multilevel inverter," in *Proc. 39th IAS Annu. Meet. Ind. Appl. Conf.*, Oct. 3–7, 2004, vol. 2, pp. 828–835.

- [40] M. Veenstra and A. Rufer, "Control of a hybrid asymmetric multilevel inverter for competitive medium-voltage industrial drives," *IEEE Trans. Ind. Appl.*, vol. 41, no. 2, pp. 655–664, Mar.-Apr. 2005.
- [41] A. Chen, L. Hu, L. Chen, Y. Deng, and X. He, "A multilevel converter topology with fault-tolerant ability," *IEEE Trans. Power Electron.*, vol. 20, no. 2, pp. 405–415, Mar. 2005.
- [42] G. Grandi, D. Ostojic, C. Rossi, and A. Lega, "Control strategy for a multilevel inverter in grid-connected photovoltaic applications," in *Proc. Int. Aegean Conf. Electr. Mach. Power Electron.*, Sep. 10–12, 2007, pp. 156–161.
- [43] P. Lezana, J. Rodriguez, and D. A. Oyarzun, "Cascaded multilevel inverter with regeneration capability and reduced number of switches," *IEEE Trans. Ind. Electron.*, vol. 55, no. 3, pp. 1059–1066, Mar. 2008.
- [44] S. Daher, J. Schmid, and F. L. M. Antunes, "Multilevel inverter topologies for stand-alone PV systems," *IEEE Trans. Ind. Electron.*, vol. 55, no. 7, pp. 2703–2712, Jul. 2008.
- [45] Z. Du, B. Ozpineci, L. M. Tolbert, and J. N. Chiasson, "DC–AC Cascaded H-bridge multilevel boost inverter with no inductors for electric/hybrid electric vehicle applications," *IEEE Trans. Ind. Appl.*, vol. 45, no. 3, pp. 963–970, May-Jun. 2009.
- [46] J. Ewanchuk, J. Salmon, and A. M. Knight, "Performance of a high-speed motor drive system using a novel multilevel inverter topology," *IEEE Trans. Ind. Appl.*, vol. 45, no. 5, pp. 1706–1714, Sep.-Oct. 2009.
- [47] Y. Liu, and F. L. Luo, "Multilevel inverter with the ability of self-voltage balancing," in *IEE Proc. Electric Power Appl.*, Jan. 1, 2006, vol. 153, no. 1, pp. 105–115.
- [48] S. De, D. Banerjee, K. Siva Kumar, K. Gopakumar, R. Ramchand, and C. Patel, "Multilevel inverters for low-power application," *IET Power Electronics*, vol. 4, no. 4, pp. 384–392, Apr. 2011.
- [49] C.-C. Hua, C.-W. Wu, and C.-W. Chuang, "A novel dc voltage charge balance control for cascaded inverters," *IET Power Electron.*, vol. 2, no. 2, pp. 147–155, Mar. 2009.
- [50] S. Gui-Jia, "Multilevel DC-link inverter," *IEEE Trans. Ind. Appl.*, vol. 41, no. 3, pp. 848–854, May-Jun. 2005.
- [51] S. Gui-Jia, "Multilevel DC link inverter," in *Proc. IEEE IAS Annu. Meet. Conf. Record Ind. Appl. Conf.*, Oct. 3–7, 2004, vol. 2, pp. 806–812.
- [52] G. Ceglia, V. Guzman, C. Sanchez, F. Ibanez, J. Walter, and M. I. Gimenez, "A new simplified multilevel inverter topology for DC-AC conversion," *IEEE Trans. Power Electron.*, vol. 21, no. 5, pp. 1311–1319, Sep. 2006.
- [53] N. A. Rahim K. Chaniago, and J. Selvaraj, "Single-phase seven-level grid-connected inverter for photovoltaic system," *IEEE Trans. Ind. Electron.*, vol. 58, no. 6, pp. 2435–2444, Jun. 2011.
- [54] G. M. Martins, J. A. Pomilio, S. Buso, and G. Spiazzi, "Three-phase low-frequency commutation inverter for renewable energy systems," *IEEE Trans. Ind. Electron.*, vol. 53, no. 5, pp. 1522–1528, Oct. 2006.
- [55] Y. Hinago and H. Koizumi, "A single phase multilevel inverter using switched series/parallel DC voltage sources," in *Proc. IEEE Energy Convers. Congr. Expo.*, Sep. 20–24, 2009, pp. 1962–1967.
- [56] Y. Hinago and H. Koizumi, "A single-phase multilevel inverter using switched series/parallel DC voltage sources," *IEEE Trans. Ind. Electron.*, vol. 57, no. 8, pp. 2643–2650, Aug. 2010.
- [57] W. Choi and F. Kang, "H-bridge based multilevel inverter using PWM switching function," in *Proc. 31st Int. Telecommun. Energy Conf.*, Oct. 18–22, 2009, pp. 1–5.
- [58] S. H. Lee and F. S. Kang, "A new structure of H-bridge multilevel inverter," in *Proc. KIPE Conf.*, 2008, pp. 388–390.
- [59] E. Babaei, "A cascade multilevel converter topology with reduced number of switches," *IEEE Trans. Power Electron.*, vol. 23, no. 6, pp. 2657–2664, Nov. 2008.
- [60] Y. Ounejjar and K. Al-Haddad, "A novel high energetic efficiency multilevel topology with reduced impact on supply network," in *Proc. 34th Annual Conf. IEEE Ind. Electron.*, Nov. 10–13, 2008, pp. 489–494.
- [61] Y. Ounejjar and K. Al-Haddad, "A new high power efficiency cascaded U cells multilevel converter," in *Proc. Ind. Electron. IEEE Int. Symp.*, Jul. 5–8, 2009, pp. 483–488.
- [62] Y. Ounejjar, K. Al-Haddad, and L. A. Gregoire, "Novel three phase seven level PWM converter," in *Proc. IEEE Electr. Power Energy Conf.*, Oct. 22–23, 2009, pp. 1–6.
- [63] Y. Ounejjar and K. Al-Haddad, "Multilevel hysteresis controller of the novel seven-level packed U cells converter," in *Proc. Int. Symp. Power Electron. Electr. Drives Autom. Motion*, Jun. 14–16, 2010, pp. 186–191.
- [64] Y. Ounejjar, K. Al-Haddad, and L. A. Grégoire, "Packed U cells multilevel converter topology: Theoretical study and experimental validation," *IEEE Trans. Ind. Electron.*, vol. 58, no. 4, pp. 1294–1306, Apr. 2011.
- [65] J. Ebrahimi, E. Babaei, and G. B. Gharehpetian, "A new multilevel converter topology with reduced number of power electronic components," *IEEE Trans. Ind. Electron.*, vol. 59, no. 2, pp. 655–667, Feb. 2012.
- [66] E. Najafi and A. H. M. Yatim, "Design and implementation of a new multilevel inverter topology," *IEEE Trans. Ind. Electron.*, vol. 59, no. 11, pp. 4148–4154, Nov. 2012.
- [67] E. Najafi, A. Yatim, and A. S. Samosir, "A new topology - reversing voltage (RV) - for multi level inverters," in *Proc. IEEE 2nd Int. Power Energy Conf.*, Dec. 1–3, 2008, pp. 604–608.
- [68] M. F. Kangarlu and E. Babaei, "A generalized cascaded multilevel inverter using series connection of submultilevel inverters," *IEEE Trans. Power Electron.*, vol. 28, no. 2, pp. 625–636, Feb. 2013.



Krishna Kumar Gupta (S'12–M'14) was born in Bachel, India. He received the B.Tech degree in electrical engineering and the M.Tech. degree in power systems from the Maulana Azad National Institute of Technology (M.A.N.I.T.), Bhopal, India, in 2005 and 2007, respectively. He received the Ph.D. degree in electrical engineering from M.A.N.I.T Bhopal, working on emerging topologies of multilevel inverters in 2013.

From 2007 to 2010, he was a Teacher at the Sagar Institute of Science and Technology (SISTec) Bhopal. Since September 2013, he has been working as an Associate Professor at the Department of Electrical and Electronics Engineering, Jai Narain College of Technology, Bhopal. His research interests include power electronics for renewable energy, energy storage devices for power system applications, real time controllers for power electronic systems, and modulation strategies for power converters. He is a recipient of "Young Scientist Award", conferred by the Council of Science and Technology, Government of Madhya Pradesh, India.

He has authored many articles published in international journals and conferences. He also serves as an active Reviewer for many journals including the IEEE TRANSACTIONS ON INDUSTRIAL ELECTRONICS, the IEEE TRANSACTIONS ON POWER ELECTRONICS, and the IET POWER ELECTRONICS.



Alekh Ranjan (S'12–M'14) was born in Mahoba, India, in 1986. He received the Bachelor of Engineering degree (Electrical) from the University Institute of Technology, Rajiv Gandhi Proudhyogiki Vishwavidyalaya, Bhopal, India, in 2009. He received the M.Tech (Electrical Drives) degree from the Maulana Azad National Institute of Technology (M.A.N.I.T.), Bhopal, in 2012.

Afterward, he was a Project Assistant at Shyam Institute, Bhopal for one year. Thereafter, he worked as a Research Assistant in M.A.N.I.T., working on the field testing of a 1 MW Permanent Magnet Synchronous Generator designed for wind energy-based power generation system. He also worked as an Assistant Professor at the Department of Electrical Engineering, M.A.N.I.T. Since November 2013, he has been working as an Executive (Design) at Global Design Center, Large Motor and Generator Plant, Crompton Greaves, Bhopal. His research interests include design of electrical machines, power converters, and grid-interfacing of renewable energy-based power generation.



Pallavee Bhatnagar (S'12–M'14) was born in Bhopal, India. She received the B.E. degree in electrical engineering from the Laxmi Narain College of Technology, Bhopal, in 1998. She received the Ph.D. degree in electrical engineering from Maulana Azad National Institute of Technology, Bhopal, India, in 2015.

From 1999 to 2001, she was an Assistant Engineer in All India Radio, Bhopal. From 2001 to 2005, she was the Head (Product Development) in Nucleus Electro-enterprises Limited, Bhopal. In 2005, she joined the National Thermal Power Corporation of India as an Engineer where she worked for one year. She is currently working as an Associate Professor at the Department of Electrical and Electronics Engineering, Jai Narain College of Technology, Bhopal. She is working on solar energy-based electric power generation and grid integration. Her research interests include maximum power point tracking in PV cells, power electronic converters, and LED-based lighting systems.



Lalit Kumar Sahu (S'12–M'14) was born in Bhilai, India, in 1986. He received the B.E. degree in electrical engineering from the Madhya Pradesh Christian College of Engineering and Technology, Bhilai, and the M.Tech. degree in electrical drives from the Maulana Azad National Institute of Technology (M.A.N.I.T), Bhopal, India, in 2008 and 2010, respectively. He received the Ph.D. degree from M.A.N.I.T. Bhopal.

He is also working as an Assistant Professor at the Department of Electrical Engineering, National Institute of Technology, Raipur, India. His research interests include power electronic converters, electrical drives, electric and hybrid electric vehicular systems and hybrid energy systems.

Dr. Sahu also serves as an active Reviewer for IEEE TRANSACTIONS ON POWER ELECTRONICS, IEEE TRANSACTIONS ON INDUSTRIAL ELECTRONICS, and IET POWER ELECTRONICS.



Shailendra Jain (M'10–SM'12) received the B.E. degree in electrical engineering from Samrat Ashok Technological Institute Vidisha, India, in 1990, the M.E. degree in power electronics from the Shri Govindram Seksaria Institute of Technology and Science, Indore, India, in 1994, and the Ph.D. degree from the Indian Institute of Technology, Roorkee, India, in 2003.

He was a Postdoctoral Research Fellow at the University of Western Ontario, London, ON, Canada, in 2007. He is currently a Professor in the Department of Electrical Engineering, National Institute of Technology, Bhopal, India. His research interests include power electronics and electric drives, power quality improvement, active power filters, high-power-factor converters, and fuel-cell-based distributed generation.

Dr. Jain received the “Career Award for Young Teachers” from the All India Council for Technical Education, New Delhi, India, for the year 2003–2004. Apart from many papers in journals of international repute, he has also authored a book *Modeling and Simulation Using MATLAB-Simulink* (New York, NY, USA: Wiley) in India.